



TRAFFIC, SIGNALIZATION AND
ROAD SAFETY PRODUCTS CATALOGUE

2025

www.asyatraffic.com



*“from asya
to all over the world”*



At the Export Summit held in Istanbul in 2016, “Secret Heroes of Exportation” award ceremony held on which is organized by Turkish Exporters Assembly (TIM) and Dünya Newspaper. Asya Traffic Signalling Inc. was granted “Young Exporter Jury’s special award”.



Asya Traffic Inc. was awarded first place out of 3403 companies in The Successful Entrepreneurs category by 3rd KOSGEB SME and Entrepreneurs Prizes in 2014



HISTORY

- 2024
 - Export to 80 Countries
- 2023
 - Export to 70 Countries
 - Ankara Chamber of Commerce (ATO) 22nd Committee Membership
 - MUSIAD Ankara Board Member
 - ITS Türkiye Board Member
- 2022
 - Export to 65 Countries
 - Certificate of TS ISO 23600 for Audible Pedestrian Touch Buttons
 - DEİK Digital Technologies Business Council Membership
 - Having ISO/IEC 27001 Information Security Management System Certificate
- 2021
 - Export to 60 countries
 - Asya Traffic INC Istanbul Branch is in activity
 - Certificate of TS EN 12352 for Solar Flashers
- 2020
 - DEİK Sierra Leone Vice Presidency
 - Establishment of ODAK R&D and Technology Inc. with partnership of Asya Traffic Inc.
 - Opening New Metal Processing, Manufacturing and Advanced Traffic Sign Section.
- 2019
 - Export to 55 countries
 - Membership of DEİK Business Diplomacy
- 2018
 - Export to 50 Countries
 - Designing the International Sales Portal Lighting Equipment Sales
- 2017
 - USSAD (Association of Transport Systems Industries) Membership and Vice President
 - Export to 45 Countries
 - Increasing the factory area to 6500 m2
- 2016
 - Membership of AUSDER - ITS Türkiye (Intelligent Traffic Systems Society)
 - 81 cities in Turkey and Export to 40 different countries
 - Turkish Exporters Assembly Young Exporter Award
- 2015
 - KOSGEB The Young Entrepreneur of the Year Award (2014)
 - Increasing the production and stock area to 5500 m2
 - Certificate of TS EN 50556 for Intersection Controllers
- 2014
 - Transition from LTD to INC. / 4000 m2 New Factory
- 2013
 - Opening of METU Technocity R & D Office
- 2012
 - Certificates of ISO 9001, ISO 14001, OHSAS
 - Establishment of R&D Department
 - Certificate of TS EN 12368 for Traffic Signals
 - Membership of "Renewable Energy and Environmental Technologies Cluster"
- 2011
 - Foundation
 - First export to Iraq

Certificates



Social Media



/asyatrafik



OUR BRANDS

SINTRA
Signalling Systems

SISTRA
Intelligent Traffic Systems

LEDTRA
LED Traffic Signs

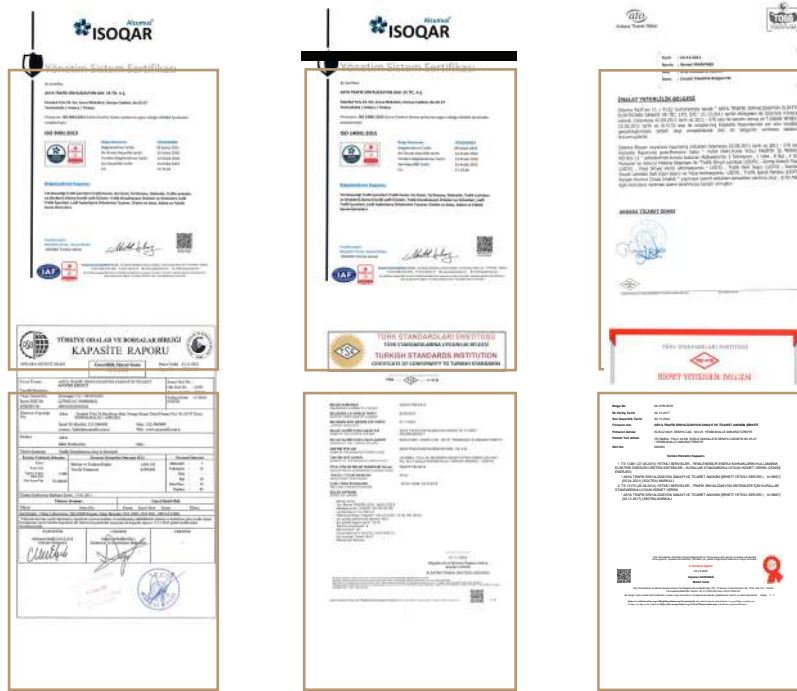
SOLTRA
Solar Traffic Systems

PLASTRA
Plastic, Rubber, Metal Road Safety Products

REFLECTRA
Reflective Traffic Signs

LUXTRA
LED Lighting Systems

CERTIFICATES



PROJECTS

2024

- Turkish Highways 13. Regional Directorate – Signalized Intersection and maintenance of existing signalized intersections for 1 year. (Antalya)
- 70 pcs Intelligent Controller and Dynamic Traffic Management System (Malaysia)
- 40 pcs Intelligent Controller and Dynamic Traffic Management System (Indonesia)

2023

- Ankara Metropolitan Municipality – 80 pcs new signalized intersection project (Ankara / Türkiye)
- Turkish Highways 8. Regional Directorate – New Signalized Intersection project (Elazığ-Bingöl-Malatya-Adıyaman / Türkiye)
- Canakkale Highway & 1915 Canakkale Bridge Project – Supply of LED Fog Flashers (Canakkale / Türkiye)

2022

- Turkish Highways General Directorate – New Signalized Intersection project (Türkiye)
- Diyarbakir Metropolitan Municipality – Supply of Signaling Equipment (Diyarbakir / Türkiye)

2021

- Sanliurfa Metropolitan Municipality – New signalized intersection project (Sanliurfa / Türkiye)

2020

- Ankara – Nigde Intelligent Highway Project – Traffic Signal Heads with LEDs and Flashers (Nigde)
- Turkish Highways 13. Regional Directorate – Signalized Intersection and maintenance of existing signalized intersections for 1 year. (Antalya)
- Turkish Highways 9. Regional Directorate – Signalized Intersection and maintenance of existing signalized intersections for 2 years.(Diyarbakir)

2019

- Antalya Metropolitan Municipality 3rd Stage Rail System Signalization Project

2018

- Highways Directorate 13. Regional – 30 pcs new signalized intersection and 1 year maintenance of existing intersections (Antalya – TÜRKİYE)
- Ankara Metropolitan Municipality – 70 pcs new signalized intersection and 20 pcs renewing signalized intersection project (Ankara – TÜRKİYE)

2017

- Ankara Metropolitan Municipality – 90 pcs new signalized intersection (Ankara – TÜRKİYE)

2016

- Yavuz Sultan Selim Bridge Project (İstanbul – TÜRKİYE)

2015

- Orhangazi (Samanlı) Tunnel Construction Project (Bursa – TÜRKİYE)
- Ashgabat Olympic Village Highway Signalling Project (Ashgabat – TÜRKMENİSTAN)

2014

- Bolu Mountain Tunnel Maintenance (Bolu – TÜRKİYE)
- Adana Intelligent Intersection Management System Project (Adana – TÜRKİYE)

APPLICATION PHOTOS



PLASTRA
Delineator
CROATIA



SINTRA
TAG Pole
ANTALYA



PLASTRA
Rubber Speed Bump
İSTANBUL



LEDTRA
Variable Message Sign (VMS)
DIYARBAKIR



LEDTRA
Variable Message Sign (VMS)
BURSA



LEDTRA
VTS
MALATYA



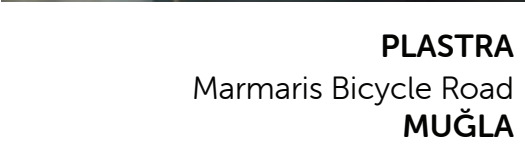
LEDTRA
VTS
KONYA



LEDTRA
LED Warning System (RADAR)
NIĞDE



LEDTRA
Variable Message Sign (VMS)
VAN



PLASTRA
Marmaris Bicycle Road
MUĞLA



PLASTRA
Variable Message Sign (VMS)
ANKARA



PLASTRA
TPU Delineator
ESTONYA



REFLECTRA
Car Park Project
ISTANBUL



REFLECTRA
Car Park Project
ISTANBUL



REFLECTRA
Car Park Project
ISTANBUL



SINTRA
Intersection Signalisation
ANKARA



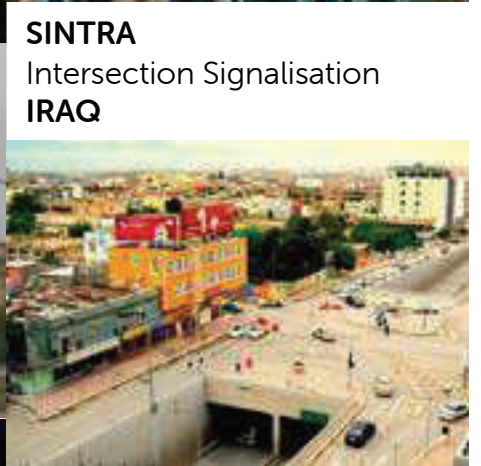
SINTRA
HGS Electronic Toll
Collection Project
ISTANBUL



SINTRA
Traffic Training Park
KEPEZ



SINTRA
Intersection Signalisation
ANTALYA



SINTRA
Intersection Signalisation
IRAQ



PLASTRA
TPU
DUBAI



SOLTRA
Solar LED Triangle Flasher
IRAQ



SOLTRA
Solar LED Sign
ANKARA



SOLTRA
Solar Flasher
ARTVIN

SIGNALLING SYSTEMS

Sintra products are manufactured according to the traffic and road safety standards.

Sintra products are used in 81 cities in Turkey and used in more than 80 countries around the world.

Power LED Signal Heads: TS EN 12368 certificated Power LED modules with IP 65 protection level. All housing materials are made of %100 UV PC.

Controllers: TS EN 50556 certificated, modular structure, green wave system adaptable, central software supported, programmable via computer, microprocessor based CPU.

Audible Pedestrian Signal: Audible signal for blinds, RILSA standards, warning signal voice level is arranged automatically according to the environment.

Infrastructure Equipments: Galvanized Signalling Poles with Highways and Municipality standards, corrosion resistant.





SINTRA POWER LED SIGNAL HEADS

| | |
|-------------------------------------|--------------------------------|
| Diameter | 200 mm /300 mm |
| Housing / Mask Material Type | Polycarbonate (%100 PC) |
| Housing Color | Black / Grey-Black |
| LED | Power LED / Red, Yellow, Green |
| Light Distribution | Fresnel Lens |
| Power Factor | PF>0.9, THD<%20 |
| Phantom Class | 5 |
| Power Consumption | 8 Watt / Module |
| Certificate | TS EN 12368:2015 |

Product Types and Codes

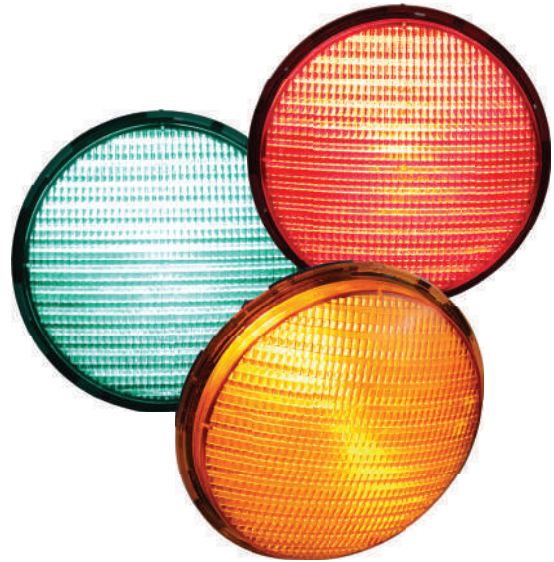
| | |
|---------------------|--|
| SN-04-02-200 | 200 mm Vehicle Signal with Sintra Power LEDs (Black / Sintra Housing) |
| SN-01-02-200 | 200 mm Vehicle Signal with Sintra Power LEDs (Black / Standard Housing) |
| SN-04-02-300 | 300 mm Vehicle Signal with Sintra Power LEDs (Black / Sintra Housing) |
| SN-01-02-300 | 300 mm Vehicle Signal with Sintra Power LEDs (Black / Standard Housing) |
| SN-04-02-275 | 200 mm Single Signal with Sintra Power LEDs (Black / Sintra Housing) |
| SN-01-02-275 | 200 mm Single Signal with Sintra Power LEDs (Black / Standard Housing) |
| SN-04-02-350 | 300 mm Single Signal with Sintra Power LEDs (Black / Sintra Housing) |
| SN-01-02-350 | 300 mm Single Signal with Sintra Power LEDs (Black / Standard Housing) |
| SN-04-02-201 | 200 mm Vehicle Signal with Arrow (Black / Sintra Housing) |
| SN-01-02-201 | 200 mm Vehicle Signal with Arrow (Black / Standard Housing) |
| SN-04-02-301 | 300 mm Vehicle Signal with Arrow (Black / Sintra Housing) |
| SN-01-02-301 | 300 mm Vehicle Signal with Arrow Figure / Sintra Power LEDs (Black / Standard Housing) |
| SN-04-02-250 | 200 mm Pedestrian Signal with Sintra Power LEDs (Black / Sintra Housing) |
| SN-01-02-250 | 200 mm Pedestrian Signal with Sintra Power LEDs (Black / Standard Housing) |



200 mm SINTRA POWER LED TRAFFIC SIGNAL MODULE

SY-01-041

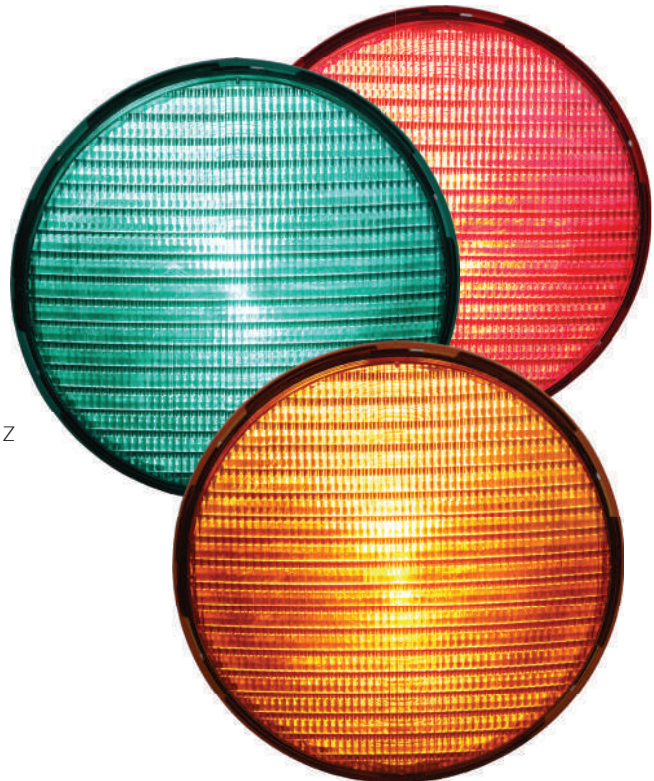
| | |
|---------------------------------|-----------------------|
| Diameter | 200 mm |
| Front Shell | Tinted, Clear |
| Color | Red, Yellow, Green |
| Light Intensity | 400 - 800 cd |
| Light Source | Power LED |
| Power Consumption | 8W |
| Operating Voltage | 220-240 V AC 50/60 Hz |
| Phantom Class | 5 |
| Power Factor | >%90 |
| Total Harmonic Distortion (THD) | <%20 |
| IP Class | IP 65 |
| Weight | 0,7 kg |
| Certificates | TS EN 12368:2015 |
| Operating Temperature | -40°/+60°C |



300 mm SINTRA POWER LED TRAFFIC SIGNAL MODULE

SY-01-046

| | |
|---------------------------------|-----------------------|
| Diameter | 300 mm |
| Front Shell | Tinted, Clear |
| Color | Red, Yellow, Green |
| Light Intensity | 400 - 800 cd |
| Light Source | Power LED |
| Power Consumption | 8W |
| Operating Voltage | 220-240 V AC 50/60 Hz |
| Phantom Class | 5 |
| Power Factor | >%90 |
| Total Harmonic Distortion (THD) | <%20 |
| IP Class | IP 65 |
| Weight | 1,1 kg |
| Certificates | TS EN 12368:2015 |
| Operating Temperature | -40°/+60°C |



DIMMABLE SINTRA POWER LED SIGNAL HEADS



Product Types and Codes

| | |
|-----------------------|---|
| SN-04-02-200GD | 200 mm Vehicle Dimmable Sintra Power LED Gray Glass |
| SN-04-02-250GD | 200 mm Vehicle Dimmable Sintra Power LED Gray Glass |
| SN-04-02-300GD | 300 mm Vehicle Dimmable Sintra Power LED Gray Glass |

| | |
|-------------------------------------|--------------------------------|
| Diameter (LED module) | 300 mm |
| Housing / Mask Material Type | Polycarbonate (% 100 PC) |
| Housing Color | Black |
| LED (Type / Color) | Power LED / Red, Yellow, Green |
| Lens Type | Gray |
| Light Distribution | Fresnel Lens |
| Power Factor | PF>0.9, THD<20% |
| Phantom Class | 5 |
| Dim Class | D1 (Dimmable) |
| Power Consumption | Max 8 Watts / Module |
| Certificates | TS EN 12368:2015, IP 65 |

100mm POWER LED SIGNAL HEADS

| | |
|-----------------------------|--------------------------------|
| Diameter | 100 mm |
| Housing /Mask Material Type | Polycarbonate (% 100 PC) |
| Housing Color | Black / Grey-Black |
| LED | Power LED / Red, Yellow, Green |
| Power Consumption | 5 Watt / Module |

Product Types and Codes

SN-04-01-100 100 mm Vehicle Signal with Power LEDs (Black / Sintra Housing)

SN-04-01-101 100 mm Power LED Signal with Triple Bicycle (Black / Sintra Housing)

SN-04-01-150 100 mm Pedestrian Signal with Power LEDs (Black-Sintra Housing)

SN-04-01-152 100 mm Power LED Signal with Double Bicycle (Black / Sintra Housing)

SN-04-01-122 100 mm Single Signal with Yellow Power LEDs (Black / Sintra Housing)

SN-04-01-151 100 mm Double Signal with Power LEDs (Black-Sintra Housing)

100mm LED SIGNAL HEADS

| | |
|-----------------------------|--------------------------|
| Diameter | 100 mm |
| Housing /Mask Material Type | Polycarbonate (% 100 PC) |
| Housing Color | Black / Grey-Black |
| LED | 5 mm LED |
| Power Consumption | 2 Watt / Module |

Product Types and Codes

SN-04-40-100 100 mm Vehicle Signal with LEDs (Black-Sintra Housing)

SN-04-40-150 100 mm Pedestrian Signal with LEDs (Black-Sintra Housing)

SN-04-40-155 100 mm Double Signal with LEDs (Black-Sintra Housing)

SN-04-40-180 100 mm Single Signal with LEDs (Black-Sintra Housing)



5mm LEDs SIGNAL HEADS

| | |
|------------------------------------|---------------------------------------|
| Diameter | 200 mm / 300 mm |
| Housing /Mask Material Type | Polycarbonate (% 100 PC) |
| Housing Color | Black / Grey-Black |
| LED | 5 mm Transparent / Red, Yellow, Green |
| Power Consumption | 12 Watt - 18 Watt / Module |
| Certificate (IP Class) | TS EN 12368:2015 |

Product Types and Codes

- SN-01-40-200** 200 mm Vehicle Signal with 5 mm LEDs (Black / Standard Housing)
- SN-04-40-200** 200 mm Vehicle Signal with 5 mm LEDs (Black / Sintra Housing)
- SN-01-40-250** 200 mm Pedestrian Signal with 5 mm LEDs (Black / Standard Housing)
- SN-04-40-250** 200 mm Pedestrian Signal with 5 mm LEDs (Black / Sintra Housing)
- SN-01-40-275** 200 mm Single Signal with 5 mm LEDs (Black / Standard Housing)
- SN-04-40-275** 200 mm Single Signal with 5 mm LEDs (Black / Sintra Housing)
- SN-01-40-300** 300 mm Vehicle Signal with 5 mm LEDs (Black / Standard Housing)
- SN-04-40-300** 300 mm Vehicle Signal with 5 mm LEDs (Black / Sintra Housing)
- SN-01-40-350** 300 mm Single Signal with 5 mm LEDs (Black / Standard Housing)
- SN-04-40-350** 300 mm Single Signal with 5 mm LEDs (Black / Sintra Housing)
- SN-01-40-290** 200 mm Vehicle Signal with Arrow 5 mm LEDs (Black / Standard Housing)
- SN-04-40-201** 200 mm Vehicle Signal with Arrow 5 mm LEDs (Black / Sintra Housing)
- SN-01-40-380** 300 mm Vehicle Signal with Arrow 5 mm LEDs (Black / Standard Housing)
- SN-04-40-301** 300 mm Vehicle Signal with Arrow 5 mm LEDs (Black / Sintra Housing)



ASYA POWER LED SIGNAL HEADS

| | |
|------------------------------------|--------------------------------|
| Diameter | 200 mm /300 mm |
| Housing /Mask Material Type | Polycarbonate (% 100 PC) |
| Housing Color | Black / Grey-Black |
| LED | Power LED / Red, Yellow, Green |
| Phantom Class | 3 |
| Power Consumption | 7 Watt / Module |
| Certificate | TS EN 12368: 2015 |

Product Types and Codes

- SN-01-01-200** 200 mm Vehicle Signal with Power LEDs (Black / Standard Housing)
- SN-04-01-200** 200 mm Vehicle Signal with Power LEDs (Black / Sintra Housing)
- SN-01-01-250** 200 mm Pedestrian Signal with Power LEDs (Black / Standard Housing)
- SN-04-01-250** 200 mm Pedestrian Signal with Power LEDs (Black / Sintra Housing)
- SN-01-01-275** 200 mm Single Signal with Power LEDs (Black / Standard Housing)
- SN-04-01-275** 200 mm Single Signal with Power LEDs (Black / Sintra Housing)
- SN-01-01-300** 300 mm Vehicle Signal with Power LEDs (Black / Standard Housing)
- SN-04-01-300** 300 mm Vehicle Signal with Power LEDs (Black / Sintra Housing)
- SN-01-01-350** 300mm Single Signal with Power LEDs (Black / Standard Housing)
- SN-04-01-350** 300 mm Single Signal with Power LEDs (Black / Sintra Housing)
- SN-01-01-290** 200 mm Vehicle Signal with Arrow Figure (Black / Standard Housing)
- SN-04-01-201** 200 mm Vehicle Signal with Arrow Figure (Black / Sintra Housing)
- SN-01-01-380** 300 mm Vehicle Signal with Arrow Figure (Black / Standard Housing)
- SN-04-01-301** 300 mm Vehicle Signal with Arrow Figure (Black / Sintra Housing)
- SN-01-01-251** 200 mm Double Signal with Power LEDs Red\Green (Black / Standard Housing)
- SN-04-01-255** 200 mm Double Signal Head with Power LEDs Red\Green (Black / Standard Housing)





200mm SINTRA POWER LED PEDESTRIAN SIGNAL HEAD with PROJECTOR (BLACK / SINTRA HOUSING)

SN-04-02-290

| | |
|-------------------------------------|---|
| Projector Luminous Color | Red, Green |
| Power Consumption | Max 23 Watt |
| Diameter (LED module) | (8W Signal Head, 15W Projector) 200 mm |
| Mask | Pedestrian |
| Housing Color / Type | Black / Sintra |
| Housing / Mask Material Type | Polycarbonate (% 100 PC) |
| LED Type / Color | Sintra Power LED / Red, Green |
| Light Distribution (Module) | Fresnel Lens |
| Power Factor | PF>0.9, THD<% 20 |
| Phantom Class | 5 |
| Protection Class | IP 65 |



200 mm DOUBLE SIGNAL HEAD with POWERLEDS

SN-01-05-501

| | |
|-------------------------------------|--------------------------|
| Diameter (LED module) | 200 mm |
| Housing / Mask Material Type | Polycarbonate (% 100 PC) |
| Housing Color | Black |
| LED (Type / Color) | Power LED, Red / Green |
| Power Consumption | Max 7 Watt / Module |
| Input Voltage | 220 V AC 50 Hz |
| Certificates | TS EN 12368:2015 |



300 mm GRAPHIC COUNTDOWN VEHICLE SIGNAL (BLACK / STANDARD)

SN-01-06-301

| | |
|------------------------------|-------------------------------|
| Diameter (LED Module) | 300 mm |
| Housing Color / Type | Black / Standard |
| Housing / Mask Material Type | Polycarbonate (% 100 PC) |
| LED (Type / Color) | 5 mm LED / Red, Yellow, Green |
| Certificate | (TS EN 12368) |
| Power Consumption | 15W / Module |
| Input Voltage | 220 V AC 50 Hz |
| LED Signal Type | Full Graphic |
| LED Module Protection | IP 65 |



300 mm VEHICLE SIGNAL WITH RED AND GREEN COUNTDOWN (BLACK / STANDARD)

SN-01-06-300

| | |
|------------------------------|-------------------------------|
| Diameter (LED Module) | 300 mm |
| Housing Color / Type | Black / Standard |
| Housing / Mask Material Type | Polycarbonate (% 100 PC) |
| LED (Type / Color) | 5 mm LED / Red, Yellow, Green |
| Power Consumption | 15W / Module |
| Input Voltage | 220 V AC 50 Hz |
| LED Module Protection | IP 65 |



300 mm VEHICLE SIGNAL WITH YELLOW COUNTDOWN MODULE (BLACK / STANDARD)

SN-01-60-300

| | |
|------------------------------|-------------------------------|
| Diameter (LED Module) | 300 mm |
| Housing Color / Type | Black / Standard |
| Housing / Mask Material Type | Polycarbonate (% 100 PC) |
| LED (Type / Color) | 5 mm LED / Red, Yellow, Green |
| Certificate | (TS EN 12368) |
| Power Consumption | 15W / Module |
| Input Voltage | 220 V AC 50 Hz |
| LED Module Protection | IP 65 |

ANIMATED PEDESTRIAN SIGNAL WITH COUNT DOWN (GREEN ALUMINIUM BODY)

SN-05-40-300

| | |
|-----------------------|--|
| Size | 370 x 670 x 70 mm |
| Weight | 9kg |
| Housing Color | Green |
| Housing Material Type | Aluminum |
| LED | 5mm Red, Green |
| Power Consumption | Max 30 Watt |
| Product Type | Graphics Count Down Animated Pedestrian Set |



300 mm STAINLESS HOUSING LED VEHICLE SIGNAL

SN-05-40-300

| | |
|-----------------------|--|
| Diameter | 300 mm |
| Housing Material Type | Mirrored Stainless Housing |
| Housing Color | Silver |
| LED | 5 mm Transparent Red , Yellow , Green |
| Power Consumption | Max 18 Watt |
| Weight | 21 kg |
| Size | 112 cm x 37 cm x 45 cm |



LED TRAFFIC COUNTDOWN TIMER

| | |
|------------------------------------|---------------------------------------|
| Diameter | 200 mm / 300 mm |
| Housing /Mask Material Type | Polycarbonate (% 100 PC) |
| Housing Color | Black / Grey-Black |
| LED | 5 mm Transparent / Red, Yellow, Green |
| Power Consumption | 10 Watt - 15 Watt / Module |
| Certificate (IP Class) | TS EN 12368:2015 |



Product Types and Codes

- SN-01-05-200 200 mm Traffic Countdown Timer with LEDs (Black / Standard Housing)
- SN-04-05-200 200 mm Traffic Countdown Timer with LEDs (Black / Standard Housing)
- SN-01-05-250 200 mm Animated Pedestrian Signal with LEDs (Black / Standard Housing)
- SN-04-05-250 200 mm Animated Pedestrian Signal with LEDs (Black / Sintra Housing)
- SN-01-05-300 300 mm Traffic Countdown Timer with LEDs (Black / Standard Housing)
- SN-04-05-300 300 mm Traffic Countdown Timer with LEDs (Black / Sintra Housing)
- SN-01-05-320 300 mm Countdown Timer with 2.5 Digits LEDs (Black / Standard Housing)
- SN-04-05-320 300 mm Countdown Timer with 2.5 Digits LEDs (Black / Sintra Housing)
- SN-01-05-325 300 mm Graphic Countdown Timer with LEDs (Black / Standard Housing)
- SN-04-05-325 300 mm Graphic Countdown Timer with LEDs (Black / Sintra Housing)
- SN-01-05-350 300 mm Animated Pedestrian Signal with LEDs (Black / Standard Housing)
- SN-04-05-350 300 mm Animated Pedestrian Signal with LEDs (Black / Sintra Housing)
- SN-01-40-260 200 mm Static Pedestrian Signal with LEDs (Black / Standard Housing)
- SN-04-40-260 200 mm Static Pedestrian Signal with LEDs (Black / Sintra Housing)
- SN-01-05-400 300 mm Adaptive Countdown Timer For Dynamic Intersections (Black / Standard Housing)
- SN-04-05-400 300 mm Adaptive Countdown Timer For Dynamic Intersections (Black / Sintra Housing)



200 mm STOP / WALK SIGNAL WITH LEDS (BLACK / STANDARD)

SN-01-45-200

| | |
|-----------------------|------------------------------|
| Diameter | 200 mm |
| Housing Material Type | Polycarbonate (% 100 PC) |
| Housing Color | Black / Grey Black |
| LED (Type / Color) | 9 mm / Red, Green |
| Power Consumption | 7 W / Module |
| Certificates | IP 65 |
| Operating Voltage | 12 V DC / 24 V DC / 220 V AC |



200 mm ANIMATED PEDESTRIAN SIGNAL WITH COUNTDOWN TIMER WITH LEDS

SN-01-05-275

| | |
|------------------------------|-------------------------|
| Diameter | 200 mm |
| Weight | 6 kg |
| Housing / Mask Material Type | Polycarbonate (%100 PC) |
| Housing Color | Black / Grey-Black |
| Input Voltage | 220 V AC 50 Hz |
| LED | 5mm, Red, Green |
| Power Consumption | 30 Watt |



300 mm ANIMATED PEDESTRIAN SIGNAL WITH COUNTDOWN TIMER WITH LEDS

SN-01-05-375

| | |
|------------------------------|-------------------------|
| Diameter | 300 mm |
| Weight | 9 kg |
| Housing / Mask Material Type | Polycarbonate (%100 PC) |
| Housing Color | Black / Grey-Black |
| Input Voltage | 220 V AC 50 Hz |
| LED | 5mm, Red, Green |
| Power Consumption | 30 Watt |



200 MM DOUBLE SIGNAL HEAD WITH POWERLEDS

SN-01-02-255

| | |
|-------------------------------------|--------------------------|
| Diameter (LED module) | 200 mm |
| Housing / Mask Material Type | Polycarbonate (% 100 PC) |
| Housing Color | Black |
| LED (Type / Color) | Power LED, Red / Green |
| Power Consumption | Max 7 Watt / Module |
| Certificates | TS EN 12368:2015 |



800 X 600 MM TRAFFIC COUNTDOWN TIMER WITH LEDES

SN-01-05-500

| | |
|--------------------------|--|
| Size | 800x600 mm |
| Weight | 24 kg |
| Housing Type | Metal |
| Housing Color | Black |
| Input Voltage | 220 V AC 50 Hz |
| Digit Type | 7 Segment |
| Number of Digits | 2 Digits |
| LED | LED: 3 colors, 5mm, Red, Yellow, Green |
| Power Consumption | 30 Watt |



400 X 600 MM TRAFFIC COUNTDOWN TIMER WITH LEDES

SN-01-05-502

| | |
|--------------------------|-----------------------------------|
| Size | 400 x 600 mm |
| Weight | 15 kg |
| Housing Type | Metal |
| Housing Color | Black |
| LED | 3 colors, 5mm, Red, Yellow, Green |
| Power Consumption | 17 Watt |



TRAM TRAFFIC LIGHT SN-04-01-100TM

| | |
|------------------------------|------------------------------------|
| Dimensions | 300 x 500 x 380 mm |
| Housing | Metal (Electrostatic Powder Paint) |
| Diameter (LED Module) | 100 mm |
| LED (Type / Color) | Power LED / White |
| Power Consumption | 5 Watt / Module |
| Input Voltage | 220 V AC 50 Hz |



TRAM TRAFFIC LIGHT with 5 MM (LEDS 200 mm) SN-01-05-501

| | |
|------------------------------|---|
| Diameter | 200 mm |
| Housing Material Type | Polycarbonate (% 100 PC) |
| Mask Material Type | Metal |
| LED | 5 mm White |
| Power Consumption | Max. 5 Watt / Module |
| Operating Voltage | 220v AC (± %10) |
| Operating Temperature | -40°C / +60°C |
| Tests | Insulation Resistance / High Voltage / Stray Current |



300 mm TOLL APPROACH WARNING LED FLASHER (BLACK / STANDARD HOUSING) SN-01-40-351SB

| | |
|-----------------------------|---|
| Diameter: 300 mm | 300 mm |
| Housing Type | Polycarbonate (% 100 PC) |
| Housing Color / Type | Black / Standard Housing |
| LED Type / Quantity | 5mm LEDs, 80 pcs Yellow, 220 pcs white |
| Functions | Outer Circle (Yellow LEDs) always ON, Inner circle will flash white when triggered. |
| Power | 230 V AC |
| Power Consumption | 15 W (Max) |
| Protection Degree | IP 55s |



ACCESSIBLE PEDESTRIAN TOUCH BUTTON SN-07-008

| | |
|--------------------------|--|
| Dimensions | 120 x 270 x 84 mm |
| Weight | 2 kg |
| Body Type | Polycarbonate |
| Body Color | Yellow-Black |
| Operating Voltage | 220 V AC |
| Voice Level | Automatic / Acoustic Characteristic |
| Detection | (According to the Environment dB Level) |
| Front Face | Touch Sensor |
| Mounting | Illuminated (Desired Logo and Figure can be made) With rubber backboard, suitable with Standard and Overhead Signal Pole |
| IP Class | IP 65 |



ACCESSIBLE PEDESTRIAN TOUCH BUTTON WITH VIBRATION SN-07-012

| | |
|--------------------------|--|
| Dimensions | 150 x 320 x 100 mm |
| Weight | 2 kg |
| Body Type | Polycarbonate |
| Body Color | Yellow-Black |
| Operating Voltage | 220 V AC or 12-24 V DC |
| Voice Level | Automatic / Acoustic Characteristic (According to the Environment dB Level) |
| Detection | Capacitive Sensor with Adjustable Distance |
| Button Specs | White Backlight and Vibrational Feedback |
| Front Face | Red-Green Illuminated Text and Symbols |
| Side Panel | Magnetic, Tactile Raised Symbols |
| Programming | g: Computer, Tablet, and Smartphone via Bluetooth, RFID, Audible Countdown, Able to Operate at the Scheduled Time. |
| Mounting | Suitable for Standard and Overhead Poles with Rubber Backing |
| IP Class | IP 65 |



ACOUSTICAL SIGNAL TRANSMITTER FOR PEDESTRIANS SN-07-005

| | |
|--------------------------|--|
| Dimension | 28 x 18 x 13,5 cm |
| Weight | 1,9 kg |
| Body | %100 PC, Black |
| Operating Voltage | 220 V |
| Intended Use | Audible warning for visually impaired |
| Voice Level | Automatic, according to the environment dB level |
| Voice dB | 30-90 dB |
| Voice tone | Warning messages or "Beep" tone |

200 mm - 300 mm TOTEM TRAFFIC LIGHT

SN-09-01-200

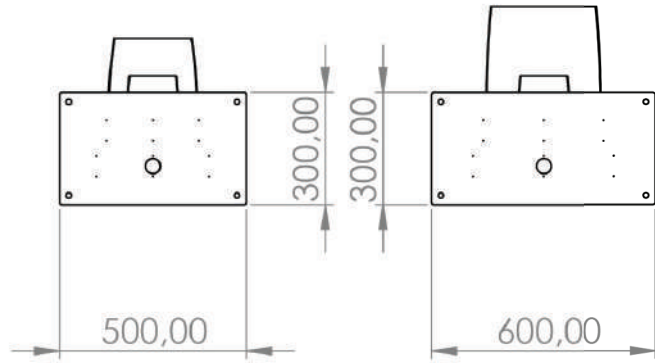
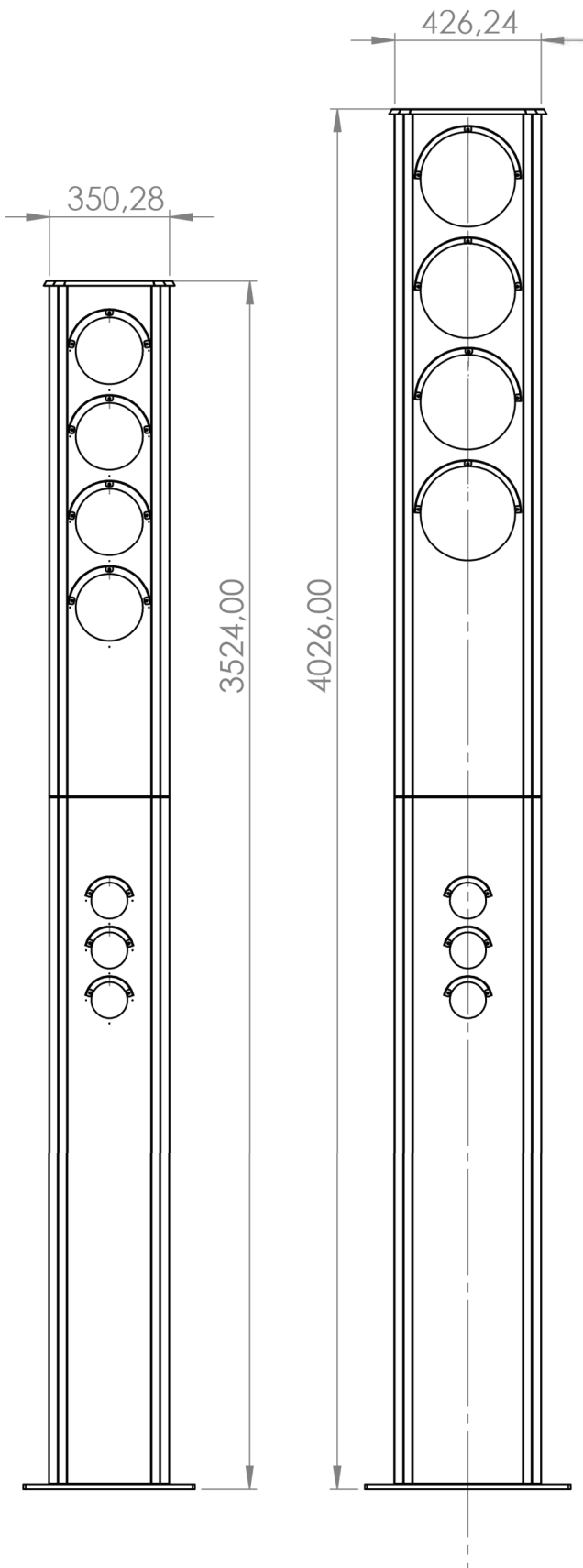
SN-09-01-300



| | |
|----------------------|--|
| Input Voltage | 220 V AC 50 Hz |
| Material Type | Electrostatic Powder Coated Metal Structure |
| Housing Color | Grey / Black |
| Housing Size | |
| 300mm | 426 x 187 x 4000 mm |
| 200mm | 350 x 187 x 3500 mm |



Bottom View





OVERHEAD / L POLE

| | |
|-------------------------------|---|
| Protection | Galvanised |
| Pipe Type | 114 x 4 mm, 139 x 5 mm, 89 x 4 mm cylindrical iron pipe |
| Standard | TS 301/2, Turkish Directorate of Highways Standards |
| Height | 6 mt |
| Product Type and Codes | SN-05-600 Without Anchorage Base SN-05-625 With Anchorage Base |



STANDARD POLE

| | |
|-------------------------------|---|
| Protection | Galvanised |
| Pipe Type | 114x4 mm cylindrical iron pipe |
| Standard | TS 301/2, Turkish Directorate of Highways Standards |
| Height | 4 m |
| Product Type and Codes | SN-05-001 Without Anchorage Base SN-05-612 With Anchorage Base |



TAG SIGNAL POLE (N/U - TYPE)

| | |
|------------------|--|
| Height | 6m |
| Wide | Depending on road width, between 10 mt. and 15 mt. |
| Coating | Hot-dip galvanized |
| Pole Type | 159 x 5 mm Cylindrical iron pipe |

COMPOSITE MANHOLE COVER (COMPOSITE JOINT BOX)



SN-10-023

| | |
|--------------------------------------|---------------------------|
| Dimensions | 485 x 485 x 400 mm |
| Material Type | Fiber Reinforced Plastics |
| Weight | 20 kg |
| Body Thickness | 10 mm |
| Bending Strength (Mpa) | Min. 150 |
| Barcol Hardness (Kj/m ²) | Min 35 |
| Water Absorption (%) | Max. 70 mg. |
| Density (Gr/Cm ³) | Min. 1.5 |
| Incombustibility Class | Bff S 1 |



INTERSECTION CONTROLLER STAND SN-10-001

| | |
|--------------|------------------------------------|
| Size | 90 x 79 cm |
| Weight | 17 kg |
| Paint | Electrostatic Paint |
| Intended Use | Used at installation of controller |



INTERSECTION CONTROLLER POLE SN-01-005

| | |
|--------------|------------------------------------|
| Size | 150 cm |
| Weight | 24 kg |
| Paint | Hot dip galvanized coating |
| Intended Use | Used at installation of controller |



GROUND ROD SN-10-010

| | |
|---------------|--------|
| Material Type | Copper |
| Size | 1 m |
| Weight | 1.5 kg |

FOCUS-LOOP COMPUTER VISION SOFTWARE PLATFORM

SN-15-029



| | |
|---------------------------|-------------------------------|
| Language Support | Tr, Eng |
| Communication Type | UDP, USB Serial Communication |
| License | Commercial |
| Operating System | Linux |
| Platform | Embedded |
| Version | V1.5.0 |
| Software Language | Python |
| Length | 235mm |
| Width | 110mm |
| Height | 75mm |



PEDESTRIAN BUTTON

SN-07-001

| | |
|--------------------------|---|
| Compatible Pole | Standard / Overhead Pole |
| Compatible Device | All devices which have pedestrian button output. |
| Intended Use | Used when pedestrians want to pass across the road. |



GREEN WAVE SATELLITE MODULE (GPS)

SN-15-010

Synchronization
Compatible Device
Master Intended Use

GPS
Maestro, Master
Green Wave System



FLASHER DEVICE

SN-10-015

Operating Voltage
Product Type

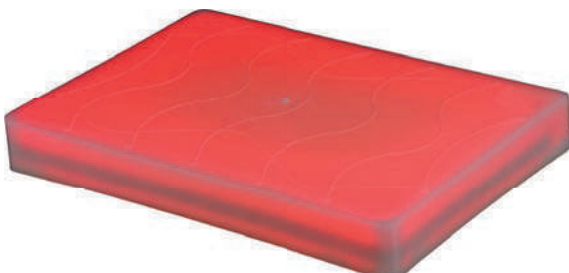
220 V / 12 V
In the LED module or
on the pole

Intended Use

Switch to flash position

CROSSING PAVEMENT LIGHT (FOR PEDESTRIAN)

SN-15-050



Size
Weight
Operating Voltage
Material (Body)
LED
Protection
Mounting

300 x 200 x 35 mm
2.4 kg
24 V DC
Polycarbonate
Red and Green LED Strip
Resin-casting
Holes are opened on the
pavement and placed in
it and glued with its adhesive



MINI SINTRA INTERSECTION CONTROLLER

SN-06-03-100M

| | |
|--------------------------|---|
| Size | 1080 x 635 x 400 mm |
| Operating Voltage | 220V AC |
| Housing Type | Galvanized Cover, Electrostatic Powder Paint |
| Signaling Groups | 4 / 8 / 12 / 16 / 20 / 24 / 28 / 32 Group Options |



POLE TYPE SINTRA INTERSECTION CONTROLLER

SN-06-03-500

| | |
|--------------------------|--|
| Dimension | 600 x 400 x 300 mm |
| Weight | 20 kgs |
| Operating Voltage | 220 V AC |
| IP Class | IP 65 |
| Mounting | with 2 pcs clamps for signaling pole |
| Housing Type | Electrostatic Powder paint, Galvanized Housing |
| Programming | USB / PC Interface / LCD Screen |
| Signaling Groups | 4 / 8 / 12 / 16 Groups Options |



PROGRAMMABLE SIGNAL CONTROL UNIT

SN-15-042

| | |
|--------------------------|---|
| Size | 200 x 300 x 130 mm |
| Weight | 1.50 kg |
| Operating Voltage | 220 V AC |
| Fixation | with 2 Pcs Pole Clamp |
| Instruction | One triple signal head and one pedestrian signal head can be connected. Operating time can be easily changed with LCD screen. |

GARAGE KIT CONTROL UNIT

SN-15-043



| | |
|--------------------------|--|
| Size | 200 x 300 x 130 mm |
| Weight | 2 kg |
| Operating Voltage | 220 V AC |
| Mounting | With 2 Pcs Brackets |
| Technical Details | 2 Pcs Vehicle Signal Head and 2 Pcs Pedestrian Signal Head can be connected. There are 4 pcs sensor input. Sensors can be optionally selected as magnetic sensor and camera sensor. It can also be controlled with remote control if needed. It can be programmed in desired scenario. |
| Explanation | It is especially used to prevent vehicles from colliding at garage entrances and exits and to determine transition priority. |

MAESTRO INTERSECTION CONTROLLER

- The Turkish Standards Institute (TSE) approval (TS EN 50556)
- Microcontroller-based modular structure
- Easy programming with the Bluetooth or USB interconnection
- Up to 32 signal groups, 32 and 32 isolated from the loop detector input
- Precision lamp current and voltage controls and secure signaling
- 4, 8, 12, 16, 20, 24, 28 and 32 group opportunities
- Ethernet, GPRS and SMS remote connection options
- 2 separate programming interface for new and experienced users
- All entries for the measurement of compliance with the census and occupancy rate
- External connections for 2 x USB port (PC, GSM, GPS, etc.).
- 16 units 16 units in different phases defined in phase and signal plan
- 48 units 16 units the signal sequence using the steps described in step
- Traffic Adaptive mode of operation for the logical function blocks
- Opening and closing sequences
- In order to avoid the unsafe or defective signalisation traffic signal plans for using the signal outputs to simulate
- The status of normal and fault modes flash, flash colors and frequencies



SINTRA
Signaling Systems

Product Types and Codes

- SN-06-01-100** 4 gr Maestro Intersection Controller
- SN-06-01-101** 8 gr Maestro Intersection Controller
- SN-06-01-102** 12 gr Maestro Intersection Controller
- SN-06-01-103** 16 gr Maestro Intersection Controller
- SN-06-01-104** 20 gr Maestro Intersection Controller
- SN-06-01-105** 24 gr Maestro Intersection Controller
- SN-06-01-106** 32 gr Maestro Intersection Controller

Product Types and Codes

- SN-06-01-150** SSM Module
- SN-06-01-151** CPU Module
- SN-06-01-152** MMI Module
- SN-06-01-153** PSM Module
- SN-06-01-154** BP Module
- SN-06-01-155** IO Module 8 Button





UPS (UNINTERRUPTABLE POWER SUPPLY) FOR SIGNALIZED INTERSECTIONS)

SN-15-082

| | |
|-------------------------------|---|
| Size | 615 x 800 x 1100 mm |
| Operating Voltage | 24v |
| Output Voltage | 220v |
| Housing Type | Electrostatic Powder paint galvanised housing |
| Activation Time | <20 ms |
| IP Class | IP65 |
| Inverter Power | 1000 Watt |
| Active Operating Hours | 8-10 hours |

SOLAR POWERED SYSTEMS

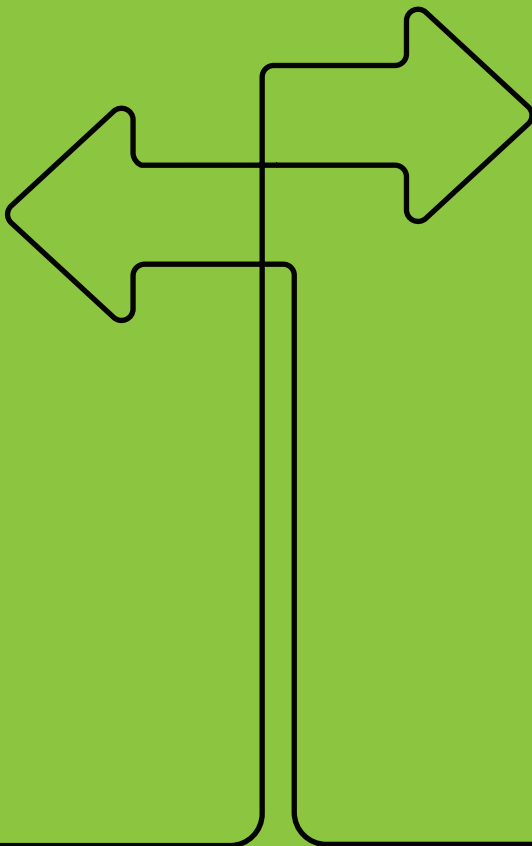
Soltra products are manufactured according to the traffic and road safety standards.

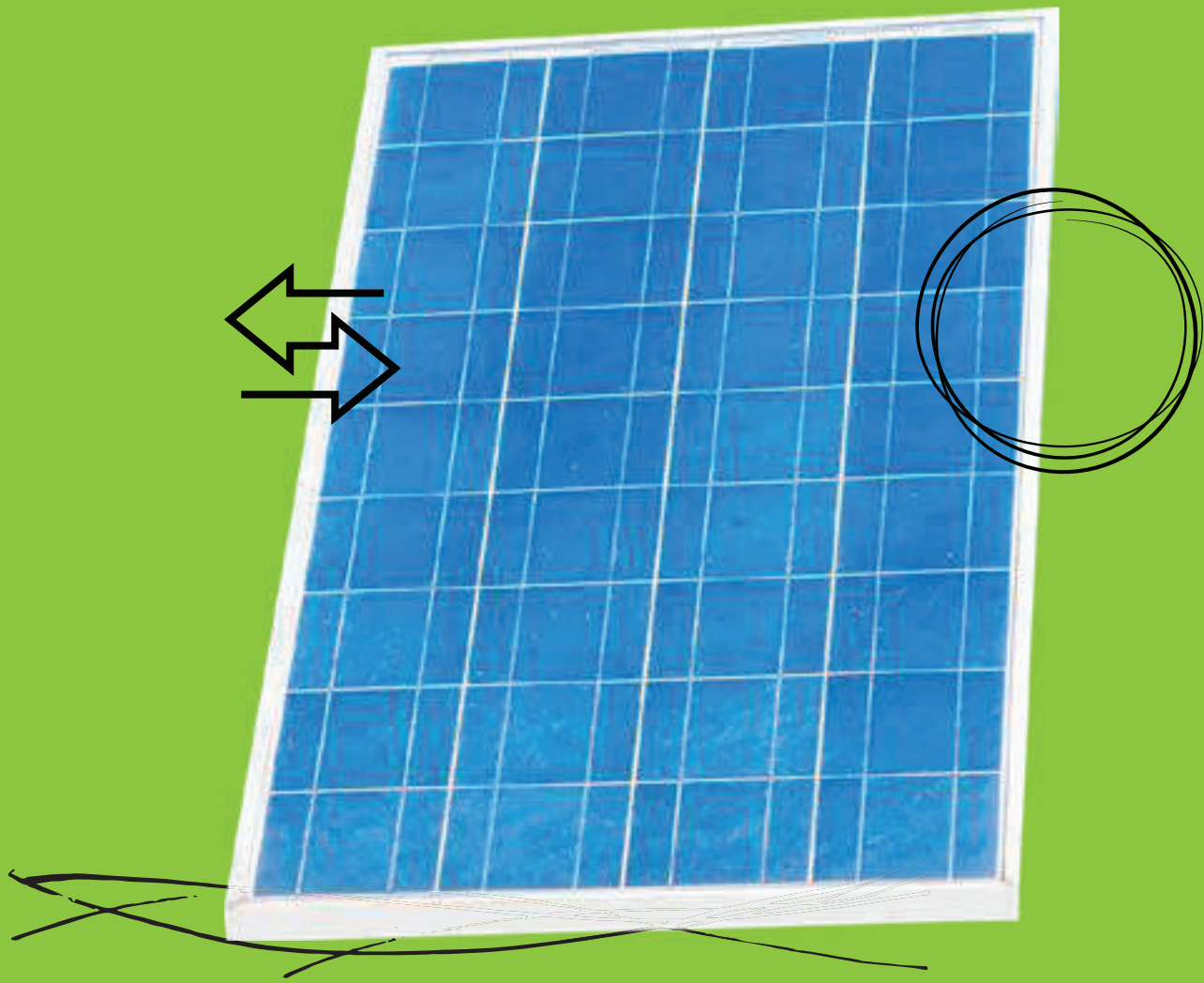
Soltra products are used in 81 cities in Turkey and used in more than 80 countries around the world.

Solar LED Road Stud: Aluminium body, LEDs that meet EN 12368 and EN 12966 standards, NiMh battery with high charge capability, IP 67 protection class.

Solar LED Flashers: LEDs that meet EN 12368 and EN 12966 standards, IEC 61215 certificated solar panel, TSE certificated battery and %100 PC body

Solar LED Traffic Signs: High Performance reflective sign, LEDs that meet EN 12368 and EN 12966 standards, IEC 61215 certificated solar panel, TSE certificated battery, IP 65 Metal or Aluminium housing.







SOLAR ROAD STUD (RED) ECO

SL-01-100E

| | |
|----------------------|---|
| Size | 125 x 145 x 28 mm |
| Material | Al body and TPE protective base |
| Weight | 0.45 kg |
| Solar Panel | 0.4 W 3 V Solar Panel |
| Battery | 1.2 V 600 mAh |
| Other Details | 5 mm, 3 x 3 pieces LEDs at both sides |
| Fixation | 2 x 7,5 x 80 mm buldex screw and 12 mm plastic fixing plug |

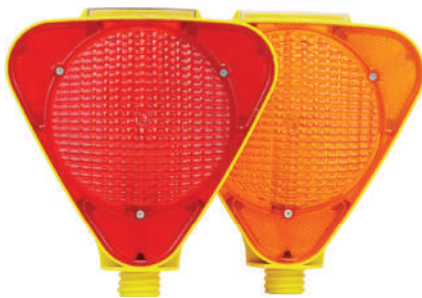


SOLAR POWER LED TRIANGLE FLASHER

SL-01-200 (YELLOW)

SL-01-201 (RED)

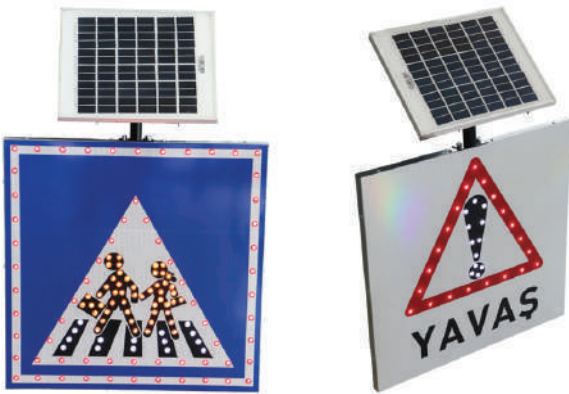
| | |
|-----------------------------|--|
| Size | 280 x 250 x 135 mm |
| Weight | 0.9 kg |
| LED | 2 x 1 W Power LED, Red or Yellow |
| Material | PC-ABS |
| Other Specifications | Double-faced lens structure, 2 x 1.2 V 2000 mAh NiMh rechargeable battery, 1 x 3 V 250 mA solar panel 2 x 1 W EN 12368 traffic standard compatible power LEDs |



SOLAR TRIANGLE FLASHER (ECO)

SL-01-210

| | |
|-----------------------------|---|
| Size | 235 x 210 x 95 mm |
| Weight | 0.8 kg |
| LED | 2 x 1 W Power LED, Red, Yellow |
| Other Specifications | Double faced lens structure 1.2 V 1200 mAh Nimh rechargeable battery |
| Material | Polycarbonate / ABS |
| Box Size | 300 x 320 x 100 mm |
| In Box | 1 piece |



SOLAR LED SIGNS WITH NORMAL PERFORMANCE REFLECTIVE

Solar Panel
Battery
Housing Type
Reflective Material
LED

10W Polycrystal (20W Optional)
 12V 7Ah Dry Type
 Galvanized
 Normal Performance
 9 mm LED



SOLAR LED SIGNS WITH HIGH PERFORMANCE REFLECTIVE

Solar Panel
Battery
Housing Type
Reflective Material
LED

10W Polycrystal (20W Optional)
 12V 7Ah Dry Type
 Black electrostatic powder paint
 High Performance
 9 mm LED



SOLAR LED ROAD MAINTENANCE SIGNS WITH NORMAL PERFORMANCE REFLECTIVE

Solar Panel
Battery
Housing Type
Reflective Material
LED

10W Polycrystal
 12V 7Ah Dry Type
 Galvanized metal sheet
 Normal Performance
 9 mm LED



200mm SOLAR FLASHER WITH LEDs

SL-03-01-200 Black Standard Housing

SL-03-03-200 Black Sintra Housing

| | |
|--------------------|----------------------|
| Diameter | 200 mm |
| Color | Black, grey-black |
| Solar Panel | 6 V, 5 W polycrystal |
| Accumulator | 6 V, 4 Ah Dry type |
| LED | 10 mm, Yellow, Red |



300mm SOLAR FLASHER WITH LEDS

SL-03-01-300 Black Standard Housing

SL-03-03-300 Black Sintra Housing

| | |
|--------------------|--------------------|
| Diameter | 300 mm |
| Color | Black, grey-black |
| Battery | 12 V, 7 - 18 Ah |
| Solar Panel | 10-20 W |
| Battery | 12 V, 7 - 18 Ah |
| LED | 10 mm, Yellow, Red |



300 mm SOLAR POWERED GPS SYNCHRONIZED FLASHER WITH LEDS

SL-03-01-400

| | |
|------------------------------|--|
| Diameter | 300 mm |
| Housing Color Options | Black, Grey-Black |
| Solar Panel | 20 W Polycrystal |
| Battery | 12 V, 20 Ah Deep Cycle |
| LED | 10 mm/5 mm, Yellow, Red |
| Synchronization | GPS module and indoor antenna |
| Operating Mode | Operating in 8 different scenarios, Smart Mode, Night Mode |
| LED Brightness | Adjustable (Dimming) |
| Power Consumption | Max 4 W |
| Charge Type | MPPT |



200mm SOLAR FLASHER WITH POWER LEDs

SL-04-01-200

| | |
|---------------------------|-------------------------|
| Dimension | 200 mm |
| LED | Power LED / Yellow, Red |
| Light Distribution | Fresnel Lens |
| Protection Cover | Hermetic case |
| Solar Panel | 5 W polycrystal |
| Battery | 6 V 4 Ah Dry type |



300mm SOLAR FLASHER WITH POWER LEDs

SL-04-01-300

| | |
|--------------------|--------------------------------------|
| Diameter | 300 mm |
| LED | 10 mm LED or Power LED / Yellow, Red |
| Module | 2 pcs flasher |
| Solar Panel | 20 W polycrystal |
| Battery | 2 pcs 12 V 7 Ah Dry type |

300mm SOLAR DOUBLE FLASHER WITH LEDs

SL-05-01-300

| | |
|--------------------|--------------------------------------|
| Diameter | 300 mm |
| LED | 10 mm LED or Power LED / Yellow, Red |
| Module | 2 pcs flasher |
| Solar Panel | 20 W polycrystal |
| Battery | 2 pcs 12 V 7 Ah Dry type |



PORTABLE VEHICLE SIGNAL HEAD (ECO)

SN-02-01-11-200

| | |
|---------------------------------|---|
| Battery | 12 V- 22 Ah Gel Battery |
| Power Consumption | 18 Watt |
| Housing Type | Electrostatic Powder Paint Metal Housing |
| Housing Size | 400 x 500 x 350 mm |
| Product Type | 2 mt. |
| Signal Head Type | 200 mm Vehicle Signal Head with Power LEDs (TS EN 12368 Certificated) |
| Signal Head Housing Type | Polycarbonate (%100 PC) |
| Weight | 50 kg |

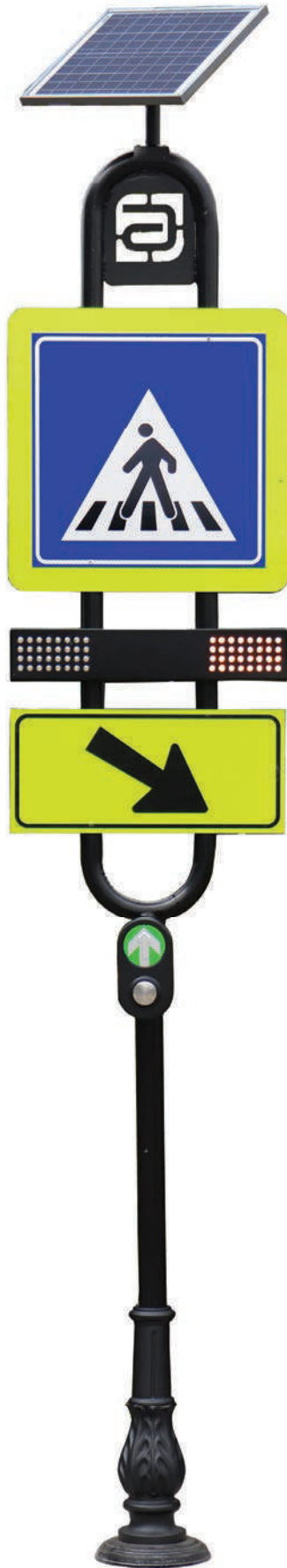


SOLAR PORTABLE VEHICLE SIGNAL HEAD WITH POWER LEDS

SN-02-01-10-200



| | |
|---------------------------------|---|
| Solar Panel | 2 x 20 Watt Monocrystal (2 axis movable) |
| Battery | 12 V 65 Ah Gel Battery |
| Communication Frequency | RF Trans receiver 868 MHz |
| Communication Distance | 2 Km (Open Field) |
| Power Consumption | 18 Watt |
| Housing Type | Metal Sheet (Foldable) |
| Housing Size | 400 x 500 x 3000 mm |
| Pole Height | 2.70 m |
| Signal Head Type | 200 mm Vehicle Signal Head with Power LEDs |
| Signal Head Housing Type | Polycarbonate (%100 PC) |
| Fixation | 4 pieces of legs and 16 pcs screw and fixing plug |
| Hardware Content | Vehicle signal head, Solar panel group, Battery group, Regulator, Portable pole and housing set |
| Optional Hardware | Pedestrian signal head, Pedestrian button |
| Mode of Operation | 4 pcs of device can operate synchronized. |



INTELLIGENT PEDESTRIAN CROSSING SYSTEM

SL-07-01-001

| | |
|----------------------------|--|
| Solar Panel | 10 W Polycrystal |
| Battery | 12 V, 7 Ah |
| LED | 9 mm / Yellow, Red |
| Reflective Material | High Performance (Type-4) |
| Detection | With Bottom |
| Pole Height | 3 mt |
| Pole Type | Metal, flanged |
| Fixation | With Anchorage and Decorative Base |
| Description | When the pre-warning system is started, the LED warning light towards the drivers will flash to warn the drivers and help pedestrians to cross safely. |

SOLAR MOBILE SPEED WARNING SYSTEM WITH DOPPLER RADAR 80 x 85 CM

LD-02-03-260

| | |
|---|---|
| Solar Panel | 4 x 20 Watt (2 axis adjustable) |
| Battery | 12V 65 Ah |
| Radar Housing Type | Aluminum |
| Housing Size | 800 x 850 x 55 mm |
| LED | 5 mm / Red, Green, White |
| Radar Type | Doppler Radar |
| Speed Measurement Distance (max) | 200 m |
| IP Class | IP 65 |
| Brightness Level | Automatically according to the environment |
| Pole Height | 3 mt |
| Pole Type | Metal Sheet (Foldable) |
| Fixation | 5 pieces of Legs and 20 pieces screw and fixing plug |
| Hardware Content | Solar panel group, battery group, regulator, radar screen, doppler radar, mobile pole, and body. |



ECO SOLAR LED LIGHT 10 W

LXSL-SK1-10W 10 W



| | |
|------------------------------|--------------------------------------|
| Power | 10 W |
| Light Output | 1200 lm |
| Battery | 18 Ah |
| Solar Panel | 20 W |
| Operating Voltage | 12 V |
| Charge Control | 4A PWM Smart Solar Charge Controller |
| Pole Length | 3 meters |
| Pole Diameter | 60 mm |
| Operating Temperature | -30°/+50°C |

REMOTE ACCESS FLASHER SYSTEM



| | |
|----------------------------|--------------------------------------|
| RF Communication Frequency | 868Mhz |
| RF Transmit Power | +27dBm |
| RF Receiver Sensitivity | -148dBm |
| Communication | Bidirectional (Transceiver) |
| GPS Receiver Types | GPS / QZSS, GLONASS, Galileo, BeiDou |
| GPS Receiver Sensitivity | -167 dBm |
| GPS LNA | Internal |
| GSM Bands | GSM 850 / 900 / 1800 / 1900 Mhz |
| GSM Receiver Sensitivity | -109dBm |
| Operating temperature | -20/+85 °C |

- Electric or solar powered operation
- Energy monitoring (battery, solar panel or power supply voltages)
- Location tracking on the map
- Failure tracking and planning
- Server access via GSM or Ethernet
- Compatible with external sensors (fog, meteorological, temperature)
- RF based communication
- GPS based synchronization
- Variable operating modes
- Low power consumption

Product Type and Codes

| | |
|--------------|---------------------------------------|
| SL-03-01-400 | 300 mm Solar Flasher RF/GPS Based |
| SL-22-001 | Remote Access Device |
| SL-22-002 | Web Based Central Management Software |

LED TRAFFIC SIGNS

Ledtra products are manufactured according to the traffic and road safety standards.

Ledtra products are used in 81 cities in Turkey and used in more than 80 countries around the world.

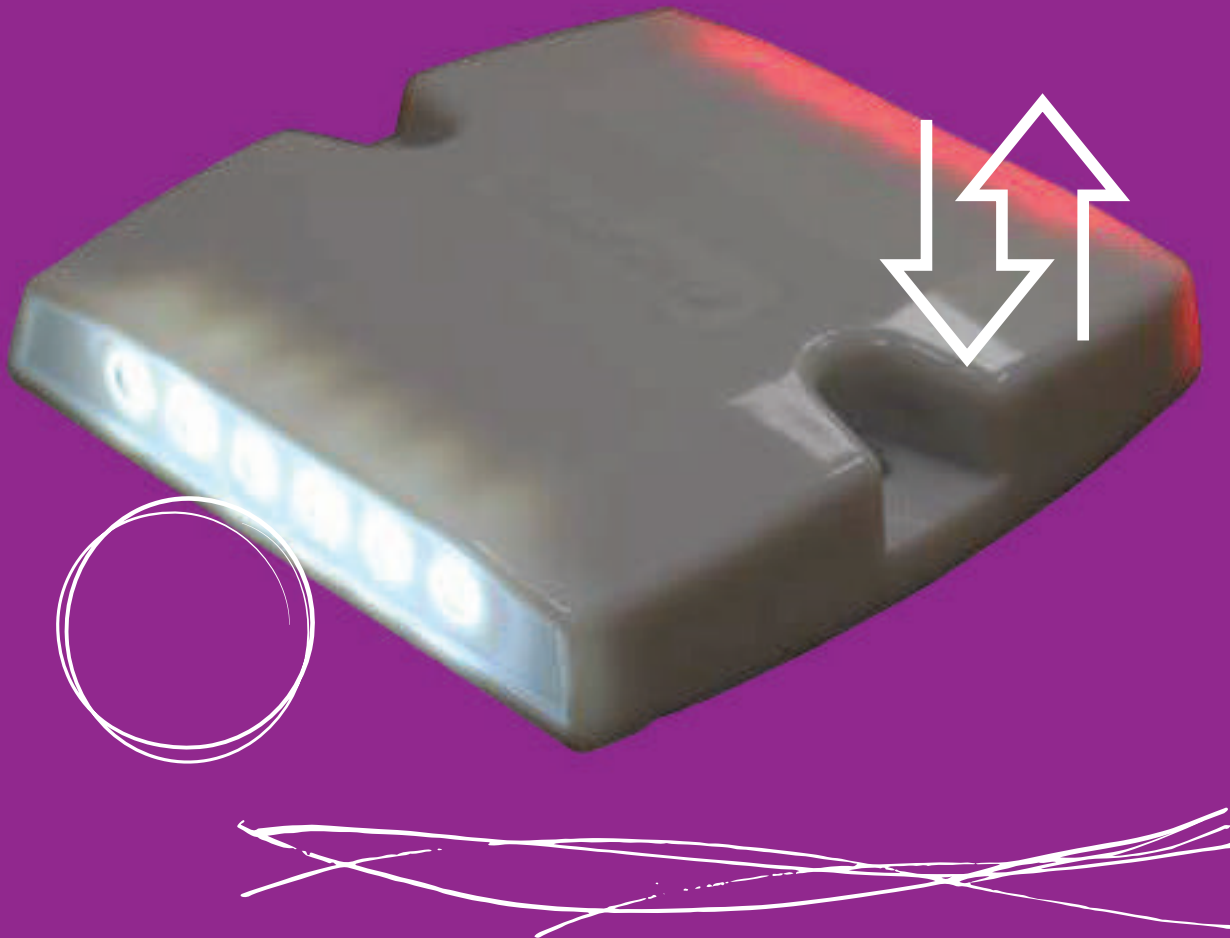
LED Traffic Signs (Constant and Variable Traffic Signs - VTS): Metal or aluminium housings with IP 65 protection class, LEDs that meets EN 12368 and EN 12966 standards.

LED Variable Message Signs (VMS): Metal or aluminium housings with IP 65 protection class,

LEDs that meets EN 12368 and EN 12966 standards. VMSs can be controlled at site (with PC or notebook) or remote controlled (centrals) by fiberoptics or GPRS or ADSL.

LED Speed Warning Systems (Doppler Radar Displays): Metal or aluminium housings with IP 65 protection class, LEDs that meets EN 12368 and EN 12966 standards. Customized sizes or LED colors related to Highways or Municipalities can be designed.





85 x 85 cm URBAN SPEED WARNING SYSTEM WITH DOPPLER RADAR

LD-02-03-200

| | |
|---|-------------------------------------|
| Size | 850 x 850 x 55 mm Housing |
| Weight | 14 kg. |
| LED | 5 mm/Red, Green, White |
| Radar Type | Doppler Radar |
| Housing Type | Aluminium |
| Brightness Level | Automatically (LDR) |
| Speed Measurement Distance (Max) | 200 m |
| Energy | 220 V AC / Solar Powered (Optional) |



140 x 55 cm URBAN SPEED WARNING SYSTEM WITH DOPPLER RADAR

LD-02-03-360

| | |
|---|--|
| Size | 1400 x 550 x 55 mm |
| Weight | 25 kg |
| LED | 5 mm / Red, Green |
| Brightness Level | Automatically according to the environment |
| Speed Measurement Distance (Max) | 200 m |
| Radar Type | Doppler Radar |
| Technical Details | In accordance with EN 12368 standard. Speed display and visual warning on graphical display with Red and Green LEDs. |
| Housing Type | Aluminium |
| Energy | 220 V AC / Solar Powered (Optional) |



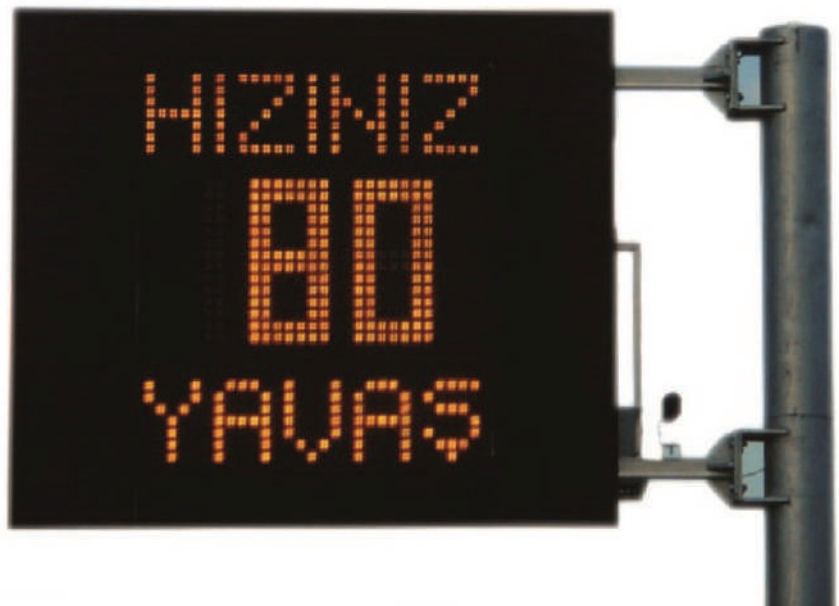
160 x 160 cm LED RADAR (SPEED WARNING SYSTEM) LD-02-02-150

| | |
|------------------|-----------------------------------|
| Size | 1600 x 1600 x 170 mm |
| Weight | 90 kg |
| LED | 5 mm, amber color |
| Brightness Level | Automatic (LDR) |
| Energy | 220 V AC / Solar power (optional) |



240 x 200 cm SPEED WARNING SYSTEM WITH DOPPLER RADAR LD-02-01-100

| | |
|----------------------------|-------------------------------------|
| Size | 2400 x 2000 x 200 mm (Housing) |
| Weight | 160 kg |
| LED | 5mm, Yellow |
| Energy | 220 V AC / Solar Powered (Optional) |
| Brightness Level | Automatically (LDR) |
| Speed measurement Distance | 200 m |



SPEED VIOLATION DETECTION WITH PLATE RECOGNITION

LD-02-05-100



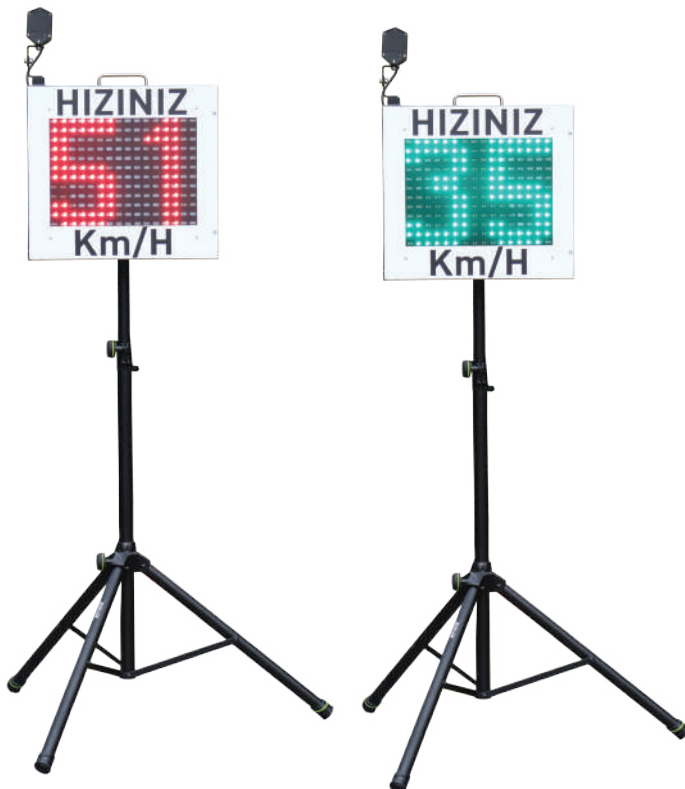
Dimensions
Weight
LED
Brightness
Camera
Speed Detection
Violation Transfer
Interface
Speed Detection Range
Energy
Pole
Software

1390 x 1010 x 55 mm
 30 kg
 5mm (Red, Green, White)
 Dynamic Contrast
 8 MP Progressive Scan CMOS
 Unit Microwave Radar
 USB, Wifi
 Excel
 10-250 km/h
 220V AC
 2 pcs (For Camera & Display)
 License Plate Recognition System
 Software



MOBILE SPEED WARNING SYSTEM

LD-02-05-001



Size
Tripod Height
Weight
Housing Type
Housing Color
LED
Power Consumption
Speed Measurement
Distance (Max)
Radar Type
Brightness Level
Battery

540 x 470 x 100 mm
 2-3 m
 7,75 kg / Tripod; 4,50 kg
 Aluminum
 Black
 5 mm / Red, Green
 20 Watt
 200 m
 Doppler Radar
 Automatic Based on
 Environment
 12 V Lion (Rechargeable)



60 x 60 cm MAXIMUM SPEED LED SIGN

LD-01-02-100

| | |
|-------------------------|--|
| Ölçü Size | 600 x 600 x 80 mm (housing) |
| Weight | 22.50 kg |
| LED | 5 mm, red, white |
| Energy | 220 V AC |
| IP Class | IP 65 |
| Brightness Level | Automatically according to environment |



60 x 60 cm GAUGE-HEIGHT LED SIGN

LD-01-02-150

| | |
|-------------------------|--|
| Size | 600 x 600 x 80 mm (Housing) |
| Weight | 22.50 kg |
| LED | 5 mm, red, white |
| Energy | 220 V AC |
| Optional | RF Remote control |
| Brightness Level | Automatically according to the environment |
| IP Class | IP 65 |



60 x 60 cm ATTENTION-SLOW LED SIGN

LD-01-02-200

| | |
|-----------------|-----------------------------|
| Size | 600 x 600 x 80 mm (housing) |
| Weight | 22.50 kg |
| LED | 5 mm / Red, White |
| Energy | 220 V AC |
| IP Class | IP 65 |



100 cm MAX. SPEED LIMITATION LED SIGN

LD-01-01-100

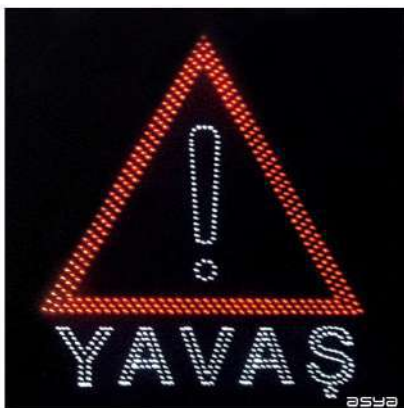
| | |
|-------------------------|--|
| Size | 1000 x 1000 x 110 mm (Housing) |
| Weight | 46.50 kg |
| LED | 5 mm, red, white |
| Energy | 220 V AC |
| Optional | RF Remote Controller |
| Speed Options | 30-40-60 or 30-50-70 |
| Brightness level | Automatically according to the environment |
| IP Class | IP 65 |



100 x 100 cm GAUGE-HEIGHT LED SIGN

LD-01-01-150

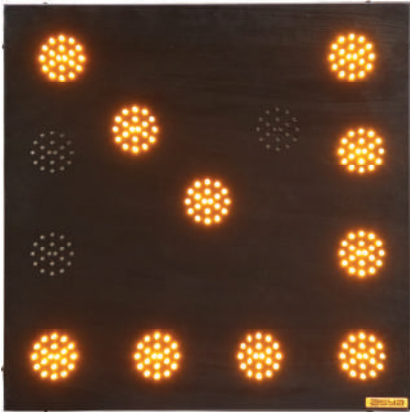
| | |
|-------------------------|--|
| Size | 1000 x 1000 mm (Housing) |
| Weight | 46.50 kg |
| LED | 5 mm, red, white |
| Energy | 220 V |
| Optional | RF Remote Controller |
| Height Options | 3.60 - 4.60 |
| Brightness Level | Automatically according to the environment |
| IP Class | IP 65 |



ATTENTION - SLOW LED SIGN

LD-01-01-200

| | |
|-------------------------|--|
| Size | 1000 x 1000 x 110 mm (Housing) |
| Weight | 46.50 kg |
| LED | 5 mm / Red, White |
| Energy | 220 V AC |
| Brightness Level | Automatically according to the environment |
| IP Class | IP 65 |



COMPULSIVE WAY (LEFT - RIGHT) LED SIGN

LD-01-03-300

| | |
|-----------------|---|
| Size | 690 x 690 x 40 mm (Housing) |
| Weight | 22 kg |
| LED | 5 mm, Yellow |
| Energy | 12-24 V |
| Options | Right arrow flasher, left arrow flasher |
| Fixation | With truck mounting equipments |
| IP Class | IP 65 |



LANE CONTROL SYSTEM (LCS)

LD-01-01-250

| | |
|-------------------------|--|
| Size | 1000 x 1000 x 110 mm (Housing) |
| Weight | 46.50 kg |
| LED | 5 mm, red, green |
| Energy | 220 V AC |
| Optional | RF Remote controller |
| Brightness Level | Automatically according to the environment |
| IP Class | IP 65 |



SCHOOL - PEDESTRIAN CROSSING LED SIGN

School: LD-01-04-100

Pedestrian: LD-01-04-150

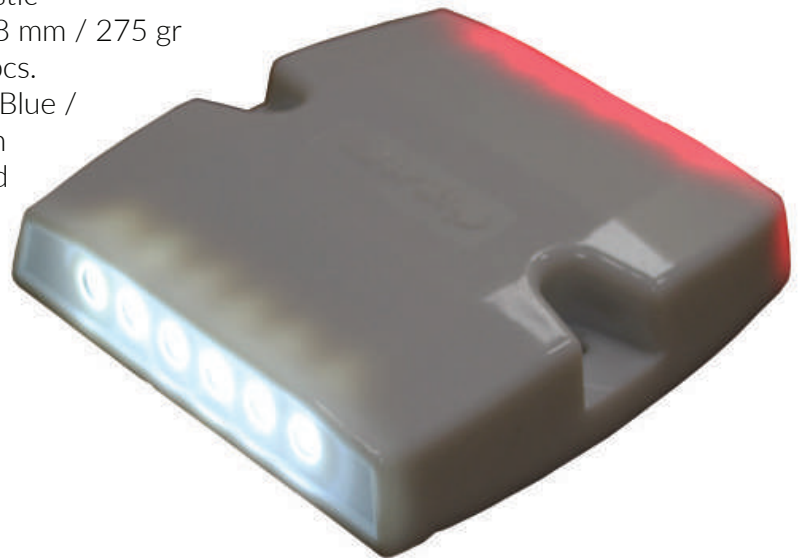


| | |
|-----------------|-----------------------------|
| Size | 650 x 650 x 80 mm (Housing) |
| Weight | 27.80 kg |
| LED | 5 mm, red, yellow |
| Energy | 220 V AC |
| IP Class | IP 65 |

ELECTRICAL LED ROAD STUD (TUNNEL STUD)

LD-04-01-110

| | |
|----------------------------------|------------------------------------|
| Material | PC or ASA Plastic |
| Size / Weight | 100 x 105 x 18 mm / 275 gr |
| LED Type / Number of LEDs | 5 mm / 2 x 6 pcs. |
| LED Colors | Red / White / Blue / Amber / Green |
| Luminous Intensity | Min 5.000 mcd |
| Protection Class | IP 68 |
| Operating Voltage | DC 24 V |



LED ROAD STUD CONTROLLER

LD-04-01-203

| | |
|-------------------------------|--|
| Size | 15 x 35 x 50 cm |
| IP Class | IP 66 |
| Operating Mode | Always ON – Flash – Sequential for each side |
| Max. Number of Buttons | 50 – 100 (According to the Project) |
| Input Voltage | 220 V AC |
| Output Voltage | 24 V DC |
| Output Terminals | 4 |
| Control Modes | With LCD Screen inside the cabinet or with SCADA |





COMBINED FIRE EXTINGUISHER AND SOS SIGN FOR TUNNELS

LD-05-02-100

| | |
|-------------------------|---------------------------------------|
| Housing Material /Color | DKP Metal / Electrostatic Black Paint |
| Dimensions | 710 x 300 x 125 mm |
| Weight | 8.50 kg |
| LED Specs | High performance White Power LEDs |
| Reflective Class | High Performance Prismatic Type 4 |
| Surface Material | 3 mm Plexiglass |
| Operating Voltage | 220 V AC / 50 Hz. |
| Power Supply | 12 V SMPS |
| Cover Lock | Structure with latch |
| Max. Power Consumption | 20 W |



FIRE EXTINGUISHER SIGN FOR TUNNELS

LD-05-03-100

| | |
|--------------------------|---------------------------------------|
| Housing Material / Color | DKP Metal / Electrostatic Black Paint |
| Dimensions | 365 x 300 x 125 mm |
| Weight | 5 kg |
| LED Specs | High performance White Power LEDs |
| Reflective Class | High Performance Prismatic Type 4 |
| Surface Material | 3 mm Plexiglass |
| Operating Voltage | 220 V AC / 50 Hz |
| Power Supply | 12 V SMPS |
| Cover Lock | Structure with latch |
| Max. Power Consumption | Max. Power Consumption: 15 W |



LED SURFACE ILLUMINATED EMERGENCY EXIT TUNNEL SIGN

LD-05-01-100

| | |
|------------------------|-----------------------------------|
| Housing Dimensions | 505 x 885 x 180 mm |
| Surface Size | 440 x 400 mm |
| Weight | 8 kg |
| Housing Material | Aluminium |
| LED Type | White Power LED |
| Max. Power Consumption | 25 W |
| Reflective Class | High Performance Prismatic Type 4 |
| Surface Material | 3 mm Plexiglass |
| Operating Voltage | 220 V AC / 50 Hz |
| Power Supply | 12 V SMPS |
| Cover Lock | Structure with latch |

EMBEDDED ALUMINIUM HARD-WIRED LED ROAD STUD

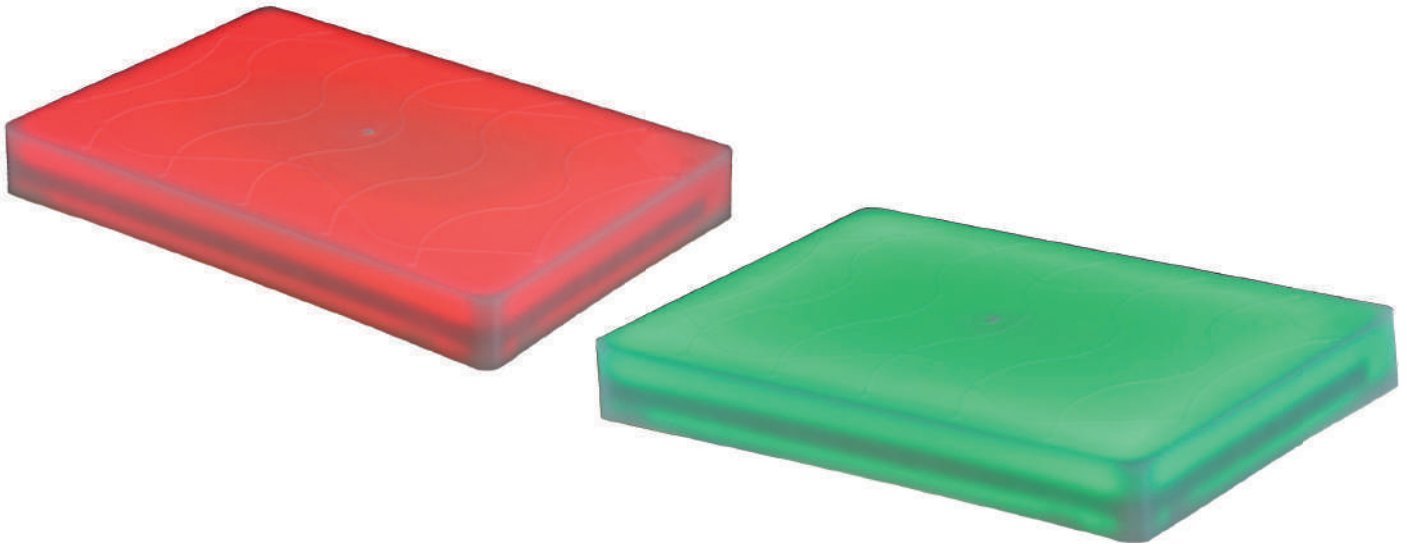
LD-04-01-900



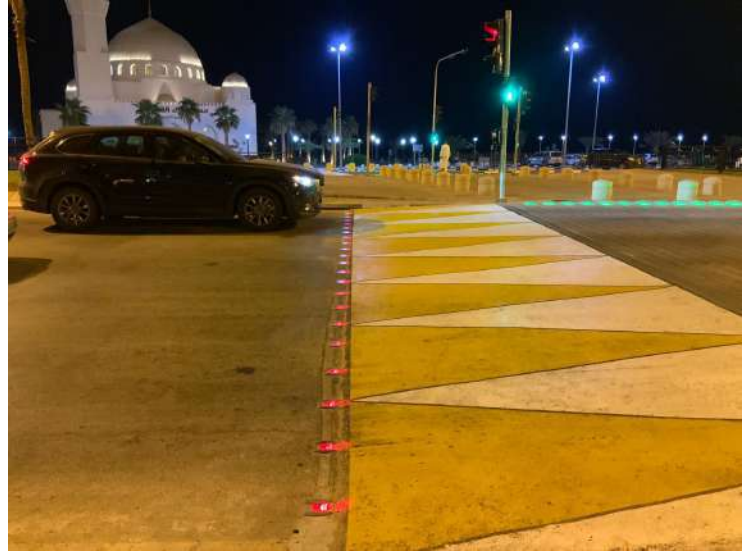
| | |
|--------------------------|---|
| Size | 120 x 118 x 71 mm |
| Weight | 0.8 kg |
| Body Material | Aluminium |
| LED | 5 mm / Red, Green |
| Number of LEDs | 3 pcs Red, 3 pcs Green (Total 6 pieces on every direction) |
| Operating Voltage | 24 V DC |
| Fixation | Holes are opened on the road and placed in the slot and glued with adhesive |

CROSSING PAVEMENT LIGHT (FOR PEDESTRIAN)

SN-15-050



| | |
|--------------------------|---|
| Size | 300 x 200 x 35 mm |
| Weight | 2.4 kg |
| Operating Voltage | 24 V DC |
| Material (Body) | Polycarbonate |
| LED | Red and Green LED Strip |
| Protection | Resin-casting |
| Mounting | Holes are opened on the pavement and placed in it and glued with its adhesive |



PLASTIC, RUBBER, METAL ROAD SAFETY PRODUCTS

Plastra products are manufactured according to the traffic and road safety standards.

Plastra products are used in 81 cities in Turkey and used in more than 80 countries around the world.

Rubber Speed Bumps: 1st class rubber material, long life high performance yellow reflective tapes.

Traffic Cones: PVC material, normal or high performance reflectives.

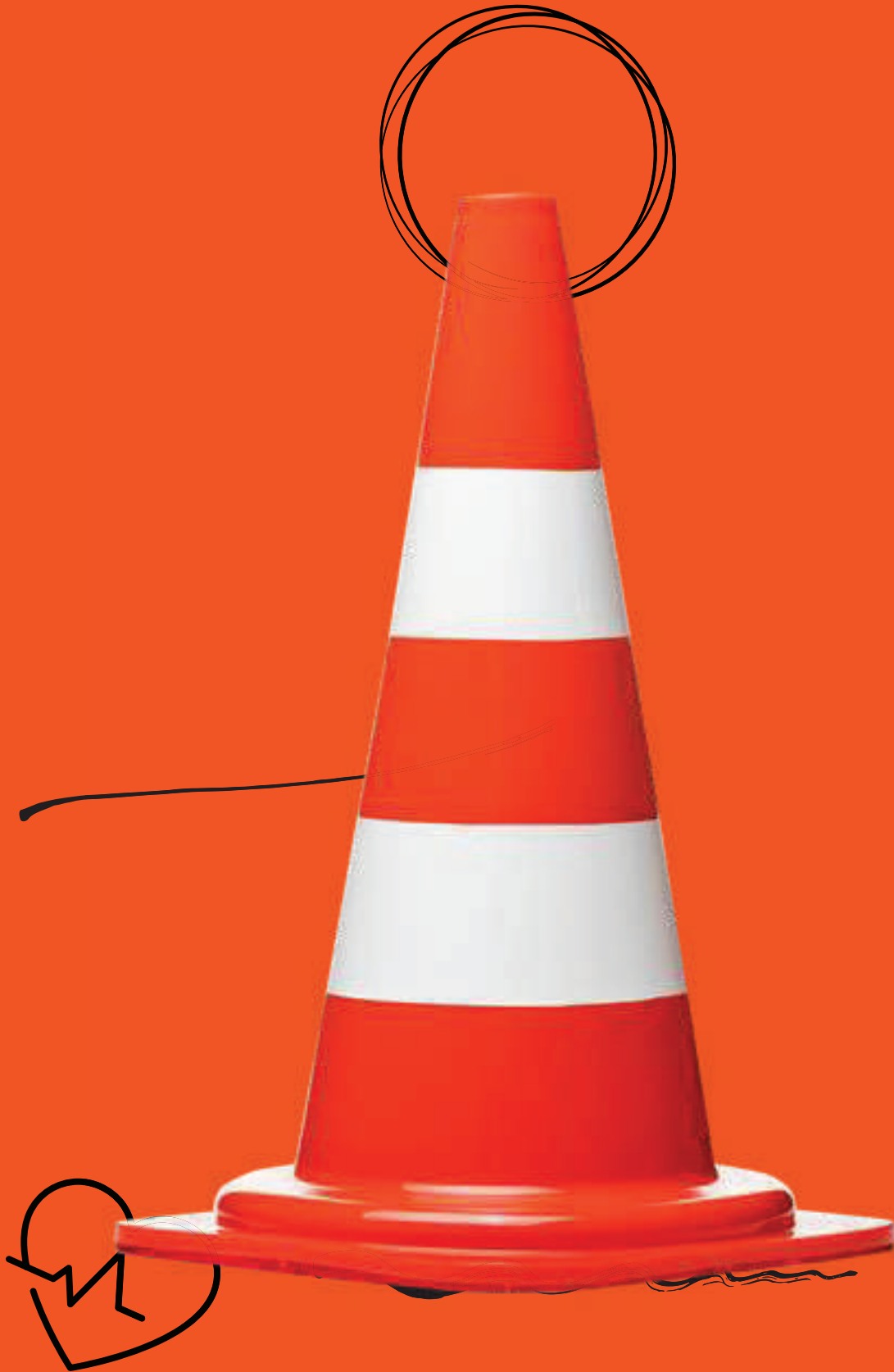
Aluminium Road Studs: Resistant to heavy road traffic pure aluminium body.

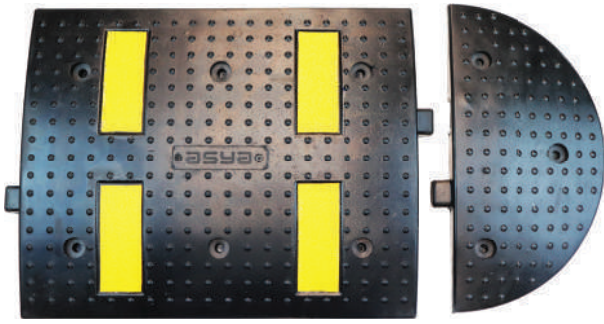
Delineators: %100 TPU material, flexible, normal or high performance reflectives.

Warning Posts: PPC material, rubber or plastic bases, normal or high performance reflectives

Parking Products: Corner protectors, traffic mirrors, car stoppers etc.



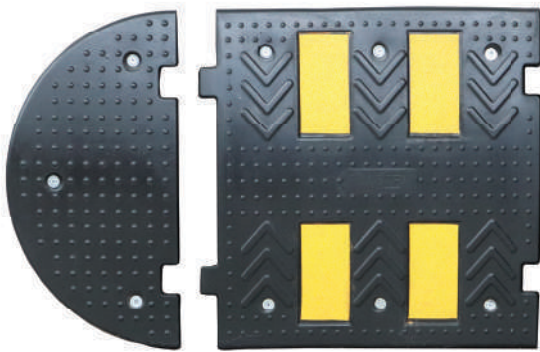




RUBBER SPEED BUMP 50 x 40 x 4.5 cm

PL-01-100

| | |
|---------------|--|
| Body Size | 500 x 400 x 45 mm |
| Header Size | 400 x 200 x 45 mm |
| Material | Rubber |
| Color Options | Black |
| Weight Body | 7 kg |
| Header | 2 kg |
| Tech. Details | 4x reflective yellow road tape |
| Fixation | 10 x 120 mm Trifon screw, 16 mm plastic fixing plug |



RUBBER SPEED BUMP 50 x 50 x 4.5 cm

PL-01-200

| | |
|---------------|--|
| Body Size | 500 x 465 x 45 mm |
| Header Size | 500 x 250 x 45 mm |
| Material | Rubber |
| Color Options | Black |
| Weight Body | 9 kg / Header: 2.80 kg |
| Tech. Details | 4 x reflective yellow road tape |
| Fixation | 10 x 120 mm Trifon screw, 16 mm Plastic fixing plug |



RUBBER SPEED BUMP 50 x 60 x 4.5 cm

PL-01-300

| | |
|---------------|--|
| Body Size | 600 x 470 x 45 mm |
| Header Size | 600 x 300 x 45 mm |
| Material | Rubber |
| Color Options | Black |
| Weight Body | 10.50 kg |
| Header | 4 kg |
| Tech. Details | 4/6 x reflective yellow road tape |
| Fixation | 10 x 120 mm Trifon screw, 16 mm Plastic fixing plug |

RUBBER SPEED BUMP (ECO) 50 x 40 cm

PL-01-110



| | |
|-------------------|--|
| Body Size | 500 x 400 x 45 mm |
| Header Size | 400 x 200 x 45 mm |
| Material Type | Rubber |
| Color Options | Black |
| Weight: Body | 5.50 kg / Header 2.55 kg |
| Technical Details | 2x yellow rubber tape |
| Fixation | 10 x 100 mm Trifon screw, 16 mm plastic fixing plug |

RUBBER SPEED BUMP (ECO) 50 x 50 cm

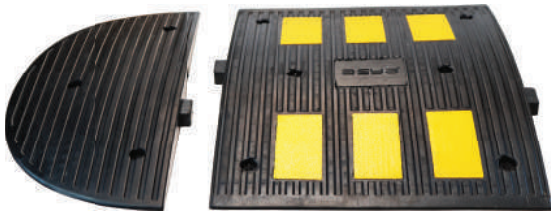
PL-01-210



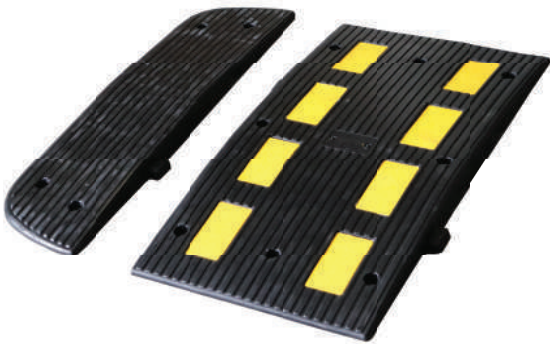
| | |
|-------------------|--|
| Body Size | 500 x 500 x 40 mm |
| Header Size | 500 x 250 x 40 mm |
| Material Type | Rubber |
| Color Options | Black |
| Weight Body | 6.75 kg / Header 2.35 kg |
| Technical Details | 4x yellow rubber tape |
| Fixation | 10 x 100 mm Trifon screw, 16 mm plastic fixing plug |

RUBBER SPEED BUMP (ECO) 50 x 60 cm

PL-01-310



| | |
|---------------|---|
| Body Size | 500 x 600 x 45 mm |
| Header Size | 600 x 300 x 45 mm |
| Body Weight | 8.25 Kg |
| Header Weight | 3.00 Kg |
| Material | Rubber |
| Color Options | Black |
| Tech. Details | 6x Reflective Yellow Road Tape |
| Fixation | 10 x 100 mm Trifon screw and 16 mm Plastic fixing plug |



RUBBER SPEED BUMP 90 x 50 cm

PL-01-800

PL-01-801

| | |
|--------------------------|--|
| Body Size | 500 x 900 mm |
| Header Size | 500 x 250 mm |
| Material Type | Rubber |
| Color Options | Black |
| Technical details | 8x yellow rubber tape |
| Fixation | 10 x 120 mm trifon screw, 16 mm plastic fixing plug |

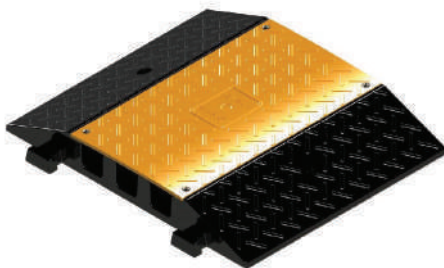


TYRE KILLER

PE 50 12290 UB

PE 50 12291 UB K

| | |
|--------------------|--|
| Header Size | 500 x 500 x 60 mm |
| Body | 90 x 500 x 60 mm |
| Weight | 7,3 kg |
| Material | Metal / PPC |
| Fixation | 6 pcs trifon screw and plastic fixing plug |



CABLE DUCT SPEED BUMP

PE-50-12298 UB

PE-50-12299 UB

| | |
|-----------------------|--|
| Body Size | 500 x 600 x 75 mm |
| Corner Size | 500 x 600 x 75 mm |
| Weight | 8.7 kg / Corner3 kg |
| Material | PPC |
| Fixation | 2 pcs 10 x 100 mm trifon screw, 16 mm plastic fixing plug |
| Other Features | 5 cm, There are 3 cable ducts |





CARPARK CORNER GUARD

PL-07-300

| | |
|--------------------------|---------------------------------------|
| Dimensions | 90 x 115 x 810 mm |
| Weight | 1.4 kg |
| Material type | PVC |
| Color Options | Black, optional any colour |
| Technical details | High performance reflective sheet |
| Installation | 6 pcs 4 x 50 mm screws, pegs, washers |



RUBBER CAR PARK CORNER GUARD (ECO-CORNERED)

PL-07-310

| | |
|--------------------------|-----------------------------|
| Size | 800 x 100 x 100 mm |
| Weight | 1.6 kg |
| Technical Details | 4 Pcs High Reflective Sheet |
| Material | Rubber |
| Fixation | 6 Pcs buldex screw and nail |



OVAL RUBBER CAR PARK CORNER GUARD (ECO)

PL-07-320

| | |
|--------------------------|-----------------------------|
| Size | 800 x 100 x 100 mm |
| Weight | 2.75 Kg |
| Technical Details | 4 Pcs High Reflective Sheet |
| Material | Rubber |
| Fixation | 6 Pcs buldex screw and nail |



DELINEATOR 30 x 8 cm (ECO) PL-03-100

| | |
|--------------------------|---|
| Dimension | 300 x 80 mm |
| Base Diameter | 200 mm |
| Weight | 0.67 kg (±%5) |
| Material | TPU |
| Color | Orange, other colors are optional |
| Reflective | Metallized |
| Technical Details | Flexible, unbreakable |
| Fixation | 10 x 100 mm trifon screw and 16 mm plastic fixing plug |



DELINEATOR 45 x 8 cm (ECO) PL-03-200

| | |
|--------------------------|--|
| Size | 450 x 80 mm |
| Base Diameter | 200 mm |
| Weight | 0.90 kg |
| Reflective | Metalized |
| Material | TPU |
| Color | Orange, other colors are optional |
| Technical Details | Flexible, unbreakable |
| Fixation | 10 x 100 mm Trifon screw, 16 mm Plastic Fixing Plug |



DELINEATOR 75 x 8 cm PL-03-400

| | |
|----------------------------|--|
| Size | 750 x 80 mm |
| Base Diameter | 1.20 kg |
| Material | TPU |
| Reflective Material | High Performance, Class 3 (circular and rectangular) Reflective Sheet |
| Color Options | Orange, other colors are optional |
| Fixation | 10 x 100 mm Trifon screw, 16 mm Plastic Fixing Plug |



DELINEATOR 75 x 8 cm (ECO) PM-70-2076

| | |
|--------------------------|---|
| Dimension | 750 x 80 mm |
| Base Diameter | 210 mm |
| Weight | 0.90 kg (±%5) |
| Material | Compound |
| Color | Orange |
| Reflective | 3 pieces Metallized Reflective |
| Technical Details | Flexible, unbreakable |
| Fixation | 10 x 100 mm trifon screw and 16 mm plastic fixing plug |

DELINEATOR 100 x 8 cm (ECO) PL-03-850



| | |
|--------------------------|--|
| Size | 1000 x 80 mm |
| Base Diameter | 200 mm |
| Weight | 1.50 kg |
| Reflective | Metalized |
| Material | TPU |
| Color | Orange, other colors are optional |
| Technical Details | Flexible, unbreakable |
| Fixation | 10 x 100 mm Trifon screw, 16 mm Plastic Fixing Plug |

FLEXIBLE DELINEATOR SIGNBOARD PL-03-700



| | |
|----------------------------|---|
| Size | 550 x 215 mm |
| Base Diameter | 1.15 kg |
| Material | TPU |
| Reflective Material | High Performance, Class 3 (circular and rectangular) Reflective Sheet |
| Color Options | Black, optional other colors |
| Fixation | On 300 x 80 mm, 450 x 80 mm or 750 x 80 mm Traffic Delineator by screwing |



PLASTIC ROUND TRAFFIC POST WITH PLASTIC BASE (ECO)

PL-06-201

| | |
|---------------------------------|--|
| Size | 120 x 1200 mm |
| Weight | 9.50 Kg |
| Material Type | PP+PE |
| Reflective Quantity | 3 pieces |
| Base Diameter | 400 mm |
| Base Details | Plastic Base |
| Technical Specifications | Warning signs, flashers, etc. can be attached using the upper grooved section. |



PLASTIC ROUND TRAFFIC POST WITH PLASTIC BASE (ECO)

PM-70-4125

| | |
|------------------------|--------------|
| Size | 70 x 1000 mm |
| Weight | 4.30 kg |
| Material | PP+PE |
| Reflective Tape | 4 pieces |
| Base Diameter | 350 mm |
| Base Details | Plastic Base |



PLASTIC ROUND TRAFFIC POST WITH PLASTIC BASE (ECO)

PL-06-202

| | |
|------------------------|--------------|
| Size | 70 x 1000 mm |
| Weight | 4.30 kg |
| Material | PP+PE |
| Reflective Tape | 4 pieces |
| Base Diameter | 350 mm |
| Base Details | Plastic Base |



PLASTIC ROUND TRAFFIC POST WITH PLASTIC BASE

PL-06-200

| | |
|----------------------------|---|
| Size | 110 x 1200 mm |
| Material | PPC (post) and PP (base) |
| Weigth | 8.3 kg (1.4 kg / 6.9 kg) |
| Fixation | Portable or optional with screw and nails |
| Color Options | Orange, Red and optional |
| Reflective Material | 3 pieces, optional up to 6 pieces |



PLASTIC ROUND TRAFFIC POST WITH RUBBER BASE

PL-06-100

| | |
|----------------------------|------------------------------------|
| Size | 110 x 1200 mm |
| Material | PPC ve Rubber |
| Weight | 8.3 kg (1.4 kg / 6.9 kg) |
| Mounting Shape | Portable or optional screw-dubel |
| Color Options | Orange, Red, other optional colors |
| Reflective Material | 3, optional up to 6 |



WARNING BARRIER WITH POSTS

PL-06-300

| | |
|--------------------------|--|
| Size | 1800 x 1200 mm |
| Weight | 19 kg (Plastic base) / 21 kg (Rubber base) |
| Reflective | Normal Performance |
| Color Options | Red, Orange, Optional |
| Technical Details | Portable, 2 pcs post and 1 pcs reflective sign |



PVC TRAFFIC CONE 50 cm DOUBLE REFLECTIVE 6 CORNERS

PL-02-156

| | |
|--------------------------|-----------------------------------|
| Height | 500 mm |
| Base Size | 330 mm |
| Weight | 1200 g |
| Product Type | PVC |
| Base Specification | 6 Corners |
| Color Options | Orange |
| Technical Specifications | With Hook, Double Reflective Type |



PVC TRAFFIC CONE 75 cm WITH BASE (ECO)

PL-02-356

PL-02-355 (With Base)

| | |
|--------------------|--|
| Height | 750 mm |
| Base Size | 490 mm |
| Weight | 5400 gr |
| Material Type | PVC |
| Base Specification | 4 edges |
| Color Options | Orange |
| Other Details | Handling hook, 2 pieces reflective material. |

PVC TRAFFIC CONE (ECO) 90 cm DOUBLE REFLECTIVE

PL-02-401



| | |
|------------------|---------------|
| Height | 900 mm |
| Weight | 3.3 kg |
| Base Type | 4 edges |
| Base Edge Size | 380 x 380 mm |
| Material | PVC |
| Color Options | Orange |
| Technical Detail | Handling hook |



ULTRA CAT EYES CONE

PE-50-12351TKA

| | |
|--------------------------------|------------------------------|
| Size | 600 mm |
| Base Size | 370 mm (4 Edge) |
| Material | PPC |
| Color Options | Red, Yellow, Blue, Green |
| Technical Detail | Accessorize Applicable |
| Product Types and Codes | PE-50-12351 600 mm / 1.35 kg |



6 EDGES TRAFFIC CONE (ECO)

PE-50-12302TK

| | |
|-------------------------|--------------------|
| Size | 500 mm |
| Base Size | 350 mm (6 Edge) |
| Material | PPC |
| Color Options | Red |
| Technical Detail | With handling hook |



PEDESTRIAN CHANNELIZERS

PE-50-12205

| | |
|----------------------|------------------|
| Size | 500 mm |
| Base Size | 250 mm |
| Material | PE |
| Color Options | Anthracite, Blue |
| Weight | 1.50 kg |

RUBBER PARKING CAR STOPPER

PL-07-100



| | |
|----------------------|--|
| Size | 740 x 150 x 100 mm |
| Material | Rubber |
| Weight | 6.50 kg |
| Color Options | Black |
| Reflector | 4xReflective Yellow Road Tape |
| Fixation | 10 x 150 mm Trifon screw, 16 mm Plastic screw |

PARKING CAR STOPPER (PIPE TYPE)

PL-07-150



| | |
|---------------------|---|
| Length | 1800 mm |
| Height | 120 mm |
| Flange | Diameter 180 mm / Thickness 2.5 mm |
| Pipe | Diameter 60 mm / Thickness 2 mm |
| Paint | Black, Electrostatic paint with yellow reflective sheets |
| Installation | 10 x 120 mm screw and 16 mm plastic plug |

PARKING CAR STOPPER 180 cm

PL-07-110



| | |
|--------------------------|---|
| Size | 1830 x 150 x 100 mm |
| Weight | 17.5 Kg (2 Pcs) |
| Technical Details | 8 Pcs Reflective Tape with Glass Beads |
| Reflective | Yellow/White |
| Material | Rubber |
| Fixation | 6 Pcs (10 x 150 mm Trifon Screw, 16 mm Plastic Screw) |

RUBBER ROAD SEPERATOR

PL-01-500



| | |
|--------------------------|---|
| Height | 600 mm |
| Weight | 3.1 kg |
| Material type | 2 mm iron |
| Color Options | Yellow, Red, Black |
| Paint | Electrostatic paint |
| Technical Details | Locked, with key, with reflective |
| Installation | 10 X 100 mm trifon screw and 16 mm plastic plug |

RUBBER CAR STOPPER (WITH RUBBER MECHANISM POLE)

PL-01-562



| | |
|-----------------------------|---|
| Stopper Size | 1800 x 200 x 150 mm |
| Pole Size | 920 x 60 mm |
| Pole Reflective | 3 pcs, high performance reflector |
| Road Stud Size | 100 x 100 mm |
| Road Stud Reflective | 2 pcs Prismatic Reflective |
| Weight | 44 Kg |
| Material | Rubber Stopper, Plastic Pole |
| Fixation | 3 pcs (10 x 150 mm Trifon Screw, Bolt 16) |

PLASTIC ROAD SEPERATOR WITH 75 CM DELINEATOR

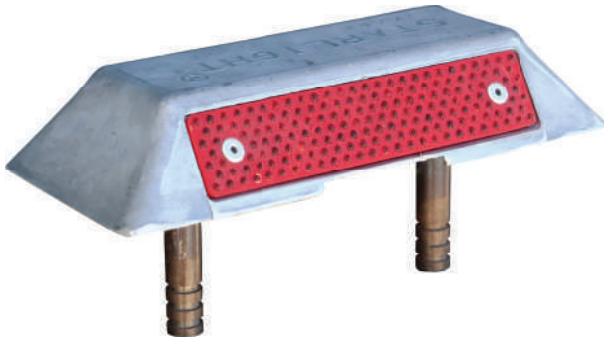
PL-05-400



| | |
|--------------------------|---|
| Size | 1000 x 200 x 80 mm |
| Total Weight | 3.9 kg |
| Delineator Weight | 0.9 kg |
| Base Weight | 3 kg |
| Material | PPC Base - TPU Delineator |
| Delineator Size | 750 x 80 mm |
| Reflective | 3 pcs Metallized Reflective Band |
| Delineator Color | Orange |
| Base Color | Yellow |
| Fixation | 4 pcs 10 x 120 mm Trifon screw and plastic plug |

ALUMINIUM ROAD STUD WITH DOUBLE RODS

PL-04-400



| | |
|------------------------|-------------------------|
| Size | 220 x 100 x 40 mm |
| Material | Al |
| Weight | 0.94 kg |
| Reflector | 2 x 171 pcs glass beads |
| Compression Resistance | 35 tons |
| Fixation | 14 x 65 mm 2 rods |

ALUMINIUM ROAD STUD WITH ROD

PL-04-200



| | |
|------------------------|------------------------|
| Size | 100 x 100 x 20 mm |
| Material | Al |
| Weight | 0.32 kg |
| Reflector | 2 x 43 pcs glass beads |
| Compression Resistance | 25 tons |
| Fixation | 25 x 50 mm rod |

ALUMINIUM ROAD STUD WITH ROD (GLASS BEADS)

PE-50-12011-YB



| | |
|-----------|--------------------------------------|
| Body | 21 x 100 x 100 mm |
| Weight | 0.40 kg |
| Material | Al |
| Fixation | 2 x 5 cm anchorage with epoxy cement |
| Reflector | 3 + 3 Cat eye |

PLASTIC OVAL ROAD STUD WITH GLASS BEADS

PL-05-600

| | |
|-------------------------------|---|
| Size | 220 x 120 x 28 mm |
| Material | PPC |
| Weight | 0.23 kg |
| Color Options | Yellow, other colors are optional |
| Reflective | 6 x 7 pcs Glass Beads (Red or White) |
| Compression Resistance | 35 tons |
| Fixation | with 4 pcs 7.5 x 80 mm buldex screw and nail |

PLASTIC MINI ROAD STUD WITH GLASS BEADS

PL-05-500

| | |
|-------------------------------|---|
| Size | 128 x 88 x 30 mm |
| Material | PPC |
| Weight | 0.135 kg |
| Color options | Yellow, other colors are optional |
| Reflector | 4 x 7 pcs glass bead (Red or White) |
| Compression Resistance | 35 tons |
| Fixation | with 4 pcs 7.5 x 80 mm buldex screw and nail |

METAL ROAD STUD

PL-04-100

| | |
|-------------------------------|---------------------------|
| Size | 120 x 120 x 28 mm |
| Material | Al |
| Weight | 0.4 kg |
| Color Options | Grey |
| Lens | 2x2 pcs 10 mm Red / White |
| Fixation | Screw and Plug |
| Compression Resistance | 35 tons |





ADJUSTABLE METAL PARKING POLE

PL-07-500

| | |
|--------------------------|---|
| Product code | PL-07-500 |
| Height | 600 mm |
| Weight | 3.1 kg |
| Material type | 2 mm iron |
| Color Options | Yellow, Red, Black |
| Paint | Electrostatic paint |
| Technical Details | Locked, with key, with reflective |
| Installation | 10 X 100 mm trifen screw and 16 mm plastic plug |



METAL DELINEATOR 45 x 8.9 cm

PL-07-600

| | |
|----------------------|---|
| Size | 450 x 89 mm |
| Base Diameter | 170 mm |
| Weight | 3 kg |
| Paint | Electrostatic paint |
| Color | Black |
| Reflective | 1 pcs Metalized Reflective Tape |
| Fixation | 10 x 100 mm Trifen screw and 16 mm Plastic plug |



TRAFFIC SAFETY MIRROR

PL-07-350

| | |
|--------------------------|---|
| Material | ABS |
| Color Options | Yellow-Black, White-Red |
| Technical Details | Acrylic Mirror |
| Fixation | 8 Special apparatus between 50 and 75 fixed to pole Fixation to wall with screw and nail |

PRIVATE PARKING SPACE WITH REMOTE CONTROL (WITH MOBILE APPLICATION)

PL-12-001



| | |
|--------------------------|----------------|
| Open Height | 60 cm |
| Closed Height | 10 cm |
| Base Size | 40 x 50 cm |
| Weight | 8 kg |
| Material Type | Metal |
| Color Options | Yellow - Black |
| Operating Voltage | 12V |
| Control Distance | 50 meters |
| Other Details | |

It can be controlled by remote control and Android mobile software. It makes an audible warning during opening and closing. It is a rechargeable portable product.

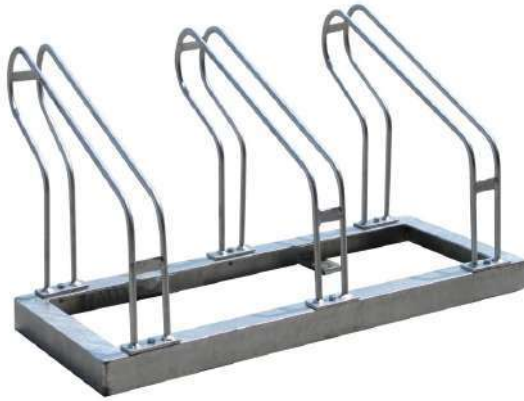
PRIVATE PARKING SPACE WITH REMOTE CONTROL (WITH MOBILE APPLICATION)

PL-12-002



| | |
|--------------------------|--------------|
| Open Height | 60 cm |
| Closed Height | 10 cm |
| Base Size | 40 x 50 cm |
| Weight | 8 kg |
| Material Type | Metal |
| Color Options | Blue - Black |
| Operating Voltage | 12V |
| Control Distance | 50 meters |
| Other Details | |

It can be controlled by remote control and Android mobile software. It makes an audible warning during opening and closing. It is a rechargeable portable product.



BICYCLE PARKING PLACES (3 PARKING)

PL-07-200

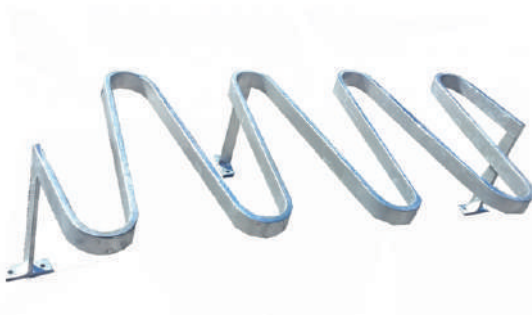
| | |
|-------------------|---|
| Dimensions | 40 x 120 x 43 cm |
| Weight | 16 kg |
| Material | 40 x 40 brackets and 12 mm steel transmission |
| Protection | Hot-dip galvanized |



BICYCLE PARKING PLACES (5 PARKING)

PL-07-250

| | |
|-------------------|---|
| Dimensions | 40 x 180 x 43 cm |
| Weight | 25 kg |
| Material | 40 x 40 brackets and 12 mm steel transmission |
| Protection | Hot-dip galvanized |



BICYCLE PARKING PLACES "Z TYPE" **PL-07-252**

| | |
|--------------------|------------------------------|
| Dimensions | 145 x 65 x 36,50 cm |
| Weight | 37 kg |
| Material | 5 cm Folded Galvanized Metal |
| Protection | Hot-dip galvanized |
| Parking Qty | 8 parking places |
| Fixation | 6 pcs steel screw |



PE 50 120 A PLASTIC ROUND TRAFFIC SIGN
PE 50 111 PLASTIC TRIANGLE TRAFFIC SIGN
PE 50 110 A PLASTIC RECTANGULAR TRAFFIC SIGN



PE 50 196 A ULTRA PLASTIC ROUND TRAFFIC SIGN

| | | |
|-----------------|----------------------------------|----------|
| Material | PPC | |
| Measures | Plastic Round Traffic Sign | Q28 cm |
| | Plastic Triangle Traffic Sign | H39 cm |
| | Plastic Rectangular Traffic Sign | 35x41 cm |
| | Ultra Plastic Round Traffic Sign | Q38 cm |



DELINEATOR CONNECTION APPARATUS
PE 50 194 A

| | |
|-----------------|------|
| Material | PPC |
| Measures | 8 cm |



CONE CONNECTION APPARATUS
PE 50 126 A

| | |
|-----------------|---------|
| Material | PPC |
| Measures | 10.5 cm |



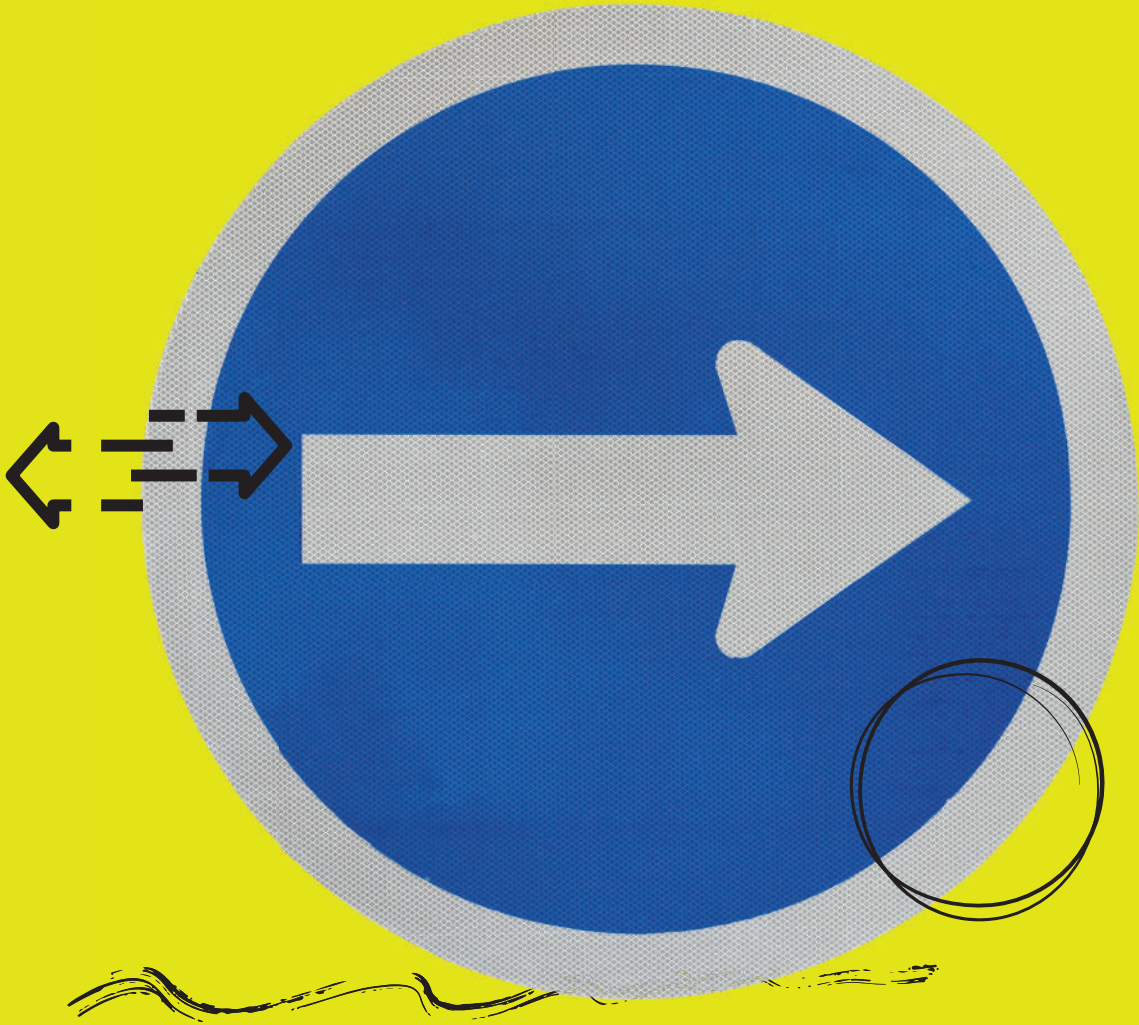
PLASTIC CHAIN
PE 50 128 A

| | |
|-----------------|------|
| Material | PPC |
| Measures | 25 m |



PLASTIC CHAIN CONNECTOR
PE 50 174 A

| | |
|-----------------|------|
| Material | PPC |
| Measures | 4 cm |



REFLECTIVE TRAFFIC SIGNS

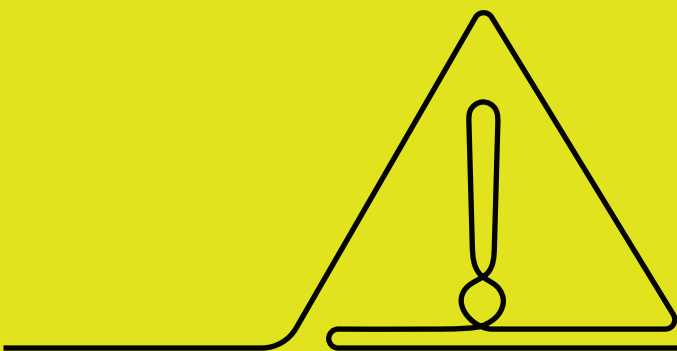
Reflectra products are manufactured according to the traffic and road safety standards.

Reflectra products are used in **81** cities in Turkey and used in more than **80** countries around **the world**.

Reflective Traffic Signs: 2 mm galvanized iron (GI), Normal Performance (Type 1) or High Performance (Type 4) reflectives, Turkish Highway standards, suitable for omega poles.

Omega Poles: Customized length and thickness, galvanized steel, corrosion resistant, suitable for traffic signs.

Customized Traffic Signs: Different sizes (60 cm, 75 cm, 90 cm, etc.), folded or plain, with rail or without rail, lambri type or not, aluminium or galvanized iron.



NORMAL PERFORMANCE TRAFFIC SIGNS



NORMAL PERFORMANCE REFLECTIVE MATERIAL STRUCTURE

| | |
|-------------------|-----------------------------|
| Sizes | Standard |
| Sign Board | 2 mm Galvanised Metal Sheet |
| Reflective | (Type I) Engineering Grade |
| Fixation | Applicable to Omega Pole |

Product Type and Codes

| | |
|-----------------------|--|
| RF-01-01-0060 | Circle Traffic Sign Board (60 cm) |
| RF-01-01-6060 | Square Traffic Sign Board (60 × 60 cm) |
| RF-01-01-0U90 | Triangle Traffic Sign Board (90 cm) |
| RF-01-01-0U75 | Triangle Traffic Sign Board (75 cm) |
| RF-01-01-5075 | Rectangle Traffic Sign Board (50 × 75 cm) |
| RF-01-01-0S60 | Octangle Traffic Sign Board (60 cm) |
| RF-01-01-0S75 | Octangle Traffic Sign Board (75 cm) |
| RF-01-01-30100 | Rectangle Traffic Sign Board (30 × 100 cm) |

HIGH PERFORMANCE TRAFFIC SIGNS



HIGH PERFORMANCE REFLECTIVE MATERIAL STRUCTURE

| | |
|-------------------|-------------------------------|
| Sizes | Standard |
| Sign Board | 2mm Galvanised Metal Sheet |
| Reflective | High-Intensity Grade (Type 4) |
| Fixation | Applicable to Omega Pole |

Product Type and Code

| | |
|-----------------------|--|
| RF-02-01-0060 | Circle Traffic Sign Board (60 cm) |
| RF-02-01-6060 | Square Traffic Sign Board (60 × 60 cm) |
| RF-02-01-0U90 | Triangle Traffic Sign Board (90 cm) |
| RF-02-01-0U75 | Triangle Traffic Sign Board (75 cm) |
| RF-02-01-5075 | Rectangle Traffic Sign Board (50 × 75 cm) |
| RF-02-01-0S60 | Octangle Traffic Sign Board (60 cm) |
| RF-02-01-0S75 | Octangle Traffic Sign Board (75 cm) |
| RF-02-01-30100 | Rectangle Traffic Sign Board (30 × 100 cm) |



Q 60 cm PLASTIC ROUND TRAFFIC SIGN RF-20-021

| | |
|--------------------------|---|
| Dimension | 600 x 600 x 20 mm |
| Weight | 1.75 Kg |
| Material | %100 PC (Polycarbonate) |
| Production Method | Plastic Injection |
| Color | Black (Resistant to UV rays) |
| Installation | Adaptable to omega poles or pipe type traffic poles |
| Traffic Sign Type | Folded and with rail |



60 x 60 cm PLASTIC SQUARE TRAFFIC SIGN RF-20-011

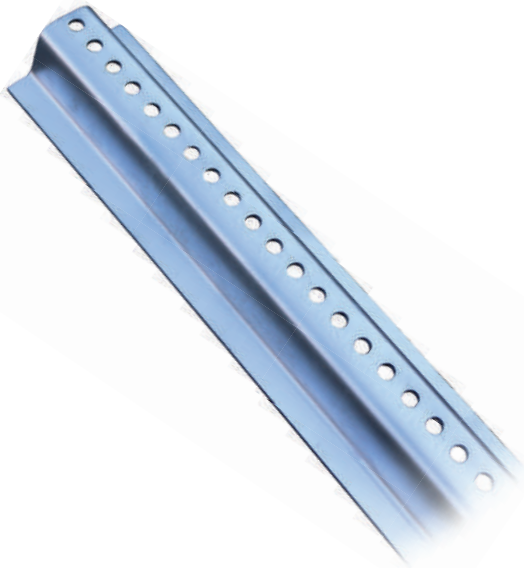
| | |
|--------------------------|---|
| Dimension | 600 x 600 x 20 mm |
| Weight | 2.15 Kg |
| Material | %100 PC (Polycarbonate) |
| Production Method | Plastic Injection |
| Color | Black (Resistant to UV rays) |
| Installation | Adaptable to omega poles or pipe type traffic poles |
| Traffic Sign Type | Folded and with rail |



90 x 90 x 90 cm PLASTIC TRIANGLE TRAFFIC SIGN RF-20-011

| | |
|--------------------------|---|
| Dimension | 900 x 900 x 900 x 20 mm |
| Weight | 2.15 Kg |
| Material | %100 PC (Polycarbonate) |
| Production Method | Plastic Injection |
| Color | Black (Resistant to UV rays) |
| Installation | Adaptable to omega poles or pipe type traffic poles |
| Traffic Sign Type | Folded and with rail |

OMEGA POLES

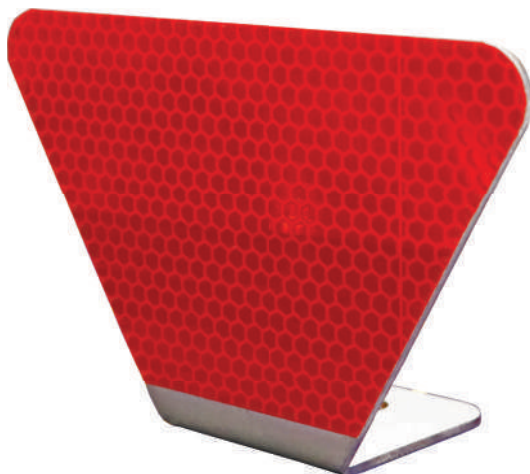


| | |
|------------------------|-------------------------------|
| Material | Galvanised Omega Profile |
| Hole Diameter | 10 mm (+/- % 10) |
| Hole Interspace | 20 mm (+/- % 10) |
| RF-01-100 | 2,5 mt length – 3 mm diameter |
| RF-01-200 | 3 mt length – 3 mm diameter |
| RF-01-300 | 3 mt length – 4 mm diameter |



CUSTOMIZED SIGNS

Any size
 Folded or unfolded
 Aluminium or galvanized bended or unbended sheet
 Panalled or plain type
 With railed or without



RAILGUARD REFLECTOR

RF-70-001

| | |
|----------------------------|---|
| Size | 140 x 95 x 50 mm |
| Mounting Place Size | 50 x 50 mm |
| Sign Board | 2 mm Galvanised Metal Sheet |
| Reflective | Prismatic Type-4 / White – Red Reflective |
| Weight | 160 g |

DOUBLE BENDED / FOLDED TRAFFIC SIGNS

| | |
|-------------------------|---|
| Sizes | Standard |
| Signs | 1,5 mm Bended and Railed Galvanized Sheet |
| Reflective Sheet | High Performance / Normal Performance |
| Fixation | Double Fixation Rails and suitable with clamps to the pipe type poles |

Product Types and Codes

Normal Performance

| | |
|------------------------|-------------------------------------|
| RF-01-01-5075CB | Rectangle Traffic Sign (50 x 75 cm) |
| RF-01-01-6060CB | Square Traffic Sign (60 x 60 cm) |
| RF-01-01-0060CB | Circle Traffic Sign (60 cm) |
| RF-01-01-0S75CB | Octagonal Traffic Sign (75 cm) |
| RF-01-01-0U75CB | Triangle Traffic Sign (75 cm) |

High Performance

| | |
|------------------------|-------------------------------------|
| RF-02-01-5075CB | Rectangle Traffic Sign (50 x 75 cm) |
| RF-02-01-6060CB | Square Traffic Sign (60 x 60 cm) |
| RF-02-01-0060CB | Circle Traffic Sign (60 cm) |
| RF-02-01-0S75CB | Octagonal Traffic Sign (75 cm) |
| RF-02-01-0U75CB | Triangle Traffic Sign (75 cm) |



SINGLE BENDED / FOLDED TRAFFIC SIGNS

Solar Studs

| | |
|-------------------------|---|
| Sizes | Standard |
| Signs | 1,5 mm Bended and Railed Galvanized Sheet |
| Reflective Sheet | High Performance / Normal Performance |
| Fixation | Double Fixation Rails and suitable with clamps to the pipe type poles |



Product Types and Codes

Normal Performance

| | |
|------------------------|-------------------------------------|
| RF-01-02-5075TB | Rectangle Traffic Sign (50 x 75 cm) |
| RF-01-02-6060TB | Square Traffic Sign (60 x 60 cm) |
| RF-01-02-0060TB | Circle Traffic Sign (60 cm) |
| RF-01-02-0S75TB | Octagonal Traffic Sign (75 cm) |
| RF-01-02-0U75TB | Triangle Traffic Sign (75 cm) |

High Performance

| | |
|------------------------|-------------------------------------|
| RF-02-02-5075TB | Rectangle Traffic Sign (50 x 75 cm) |
| RF-02-02-6060TB | Square Traffic Sign (60 x 60 cm) |
| RF-02-02-0060TB | Circle Traffic Sign (60 cm) |
| RF-02-02-0S75TB | Octagonal Traffic Sign (75 cm) |
| RF-02-02-0U75TB | Triangle Traffic Sign (75 cm) |



from **asya** to all over the world

 +90 312 244 ASYA
2792

Türkiye

Address Susuz Mah. Dempa Cad. No: 25-27
Susuz, Yenimahalle, Ankara/TURKIYE

Phone +90 312 244 27 92
Fax +90 312 396 00 08
E-mail trade@asyatraffic.com